

Drop Words

**CS2/CS3
InDesign ME Plug-in**

version 1.0

last revision: May 18, 2008

Drop

Words

Contents

3 About Drop Words

4 Installation

Enabling and Disabling Plug-ins.

6 Purchasing Licenses and Activation

8 Drop Words #1

Setup

Running Drop Words #1

10 Drop Words #2

Setup

Using Drop Words 2

Drop Word Re-formatting

Removing Drop Words

14 Addendum

What is “APID ToolAssistant”?

16 Acknowledgements

17 License Agreement

Drop Words

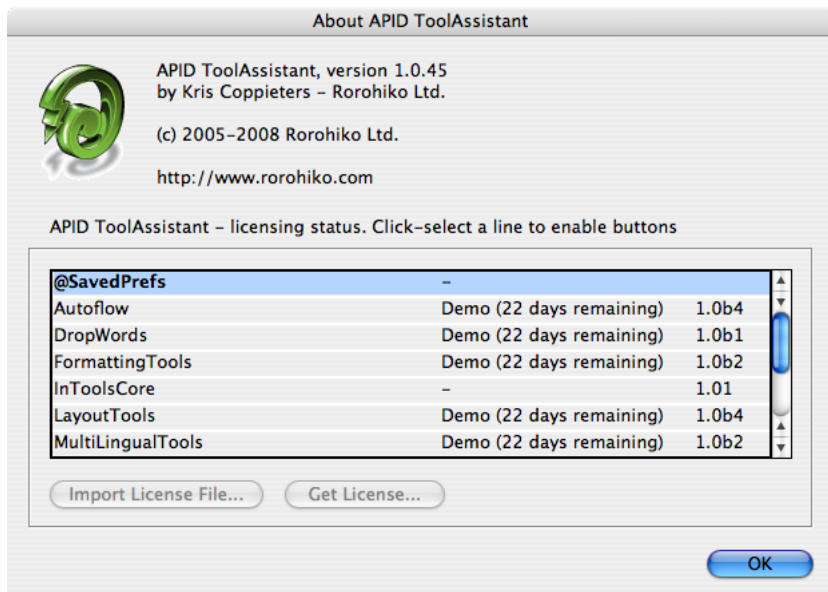
About Drop Words

“Drop Words” is a technique used extensively in Hebrew typesetting. Hebrew drop words differ from standard drop caps in a number of ways. Firstly, they are applied to the whole word, while standard drop caps are generally applied to just the first letter. Secondly, they are used on (almost) every paragraph. This is something which makes manual setting of the drops unpractical. Lastly, the drops are “virtual drops”. With normal drop caps, the characters which are dropped are enlarged to take up the number of lines for which they are set. Drop words, although often slightly larger than the rest of the text, only take up the first line. The line below is indented to start directly below the second word.

Creating all this formatting manually is a very tedious process. This plug-in was created to automate the process of creating these virtual drop words. There is a script originally written by Dave Saunders, and ultimately improved upon by us which helps in the automation. The script can be downloaded from [here](#). However you may find it cumbersome and inefficient to use in production work, especially when there is a need to update them at a later point in time. Additionally the script can take a relatively long time when run on long documents. *Drop Words* was completely re-written to enable much more extensive automation and ease of use, as well as being very quick to run. The typographical quality of the *dynamic* drop words created by the *Drop Words* plug-in is also superior to that of the script.

Drop Words

Installation



Drop Words is different than most plug-ins. It was developed using a product called “APID ToolAssistant” created by Rorohiko. There is a central controller provided by Rorohiko which does a lot of the low-level processing. *If you are interested in the technology behind the development, you can read the addendum in the back of the manual.*

There are four different files which must be installed for *Drop Words* to function properly:

1. APIDToolAssistantCSx.xxx (the exact name depends on your version)
2. @SavedPrefs.spln
3. InToolsCore.spln (version 1.01)
4. DropWords.spln.

All of these files need to be copied to InDesign’s plug-ins folder. They may be copied to a sub-folder, but they must all be in the same one!

Drop Words

Please note: APID ToolAssistant replaces an older version of the plug-in. In the past, there were two versions of the API plug-in distributed by Rorohiko. Active Page Items Developer (APID), was the version developed to work with externally developed plug-ins. The free Active Page Items Runtime (APIR), was for plug-ins developed internally at Rorohiko. If you have either of these two plug-ins installed, you must remove them and install the APID ToolAssistant instead. The older APIR or APID plug-ins will not work. You must have the most current version of the APID ToolAssistant installed (version 1.0.45).

Shown above is the “About” window of API. This window can be brought up in two ways: 1. Select InDesign → About Plug-Ins → Rorohiko Ltd. → APID ToolAssistant... 2. API → APID ToolAssistant...

In-Tools plug-ins do not show up separately in the “About Plug-Ins” menu. Information on installed In-Tools plug-ins are only displayed in the “About” window of API. If the plug-ins are properly installed you should see the displayed window (or the equivalent Windows version).

Please note the API version number near the top of the window. Your version number must say 1.0.45 or higher. Additionally it must say “APID ToolAssistant”. If it says “Active Page Item Developer” or “Active Page Item Runtime”, you have the wrong version installed. As mentioned above, both of these versions have been replaced with APID ToolAssistant.

When in doubt: search your plug-in folder for a file whose name contains “ActivePageItem”, and replace it with the new one.

In the “About” window, there is a list of all installed plug-ins and their status. The first column lists the plug-ins. The second column shows the license status. If the plug-in is licensed, “Licensed For APID” will be displayed. If the

Drop Words

plug-in is in demo mode, the word “Demo” will be displayed along with the number of days remaining until the plug-in expires. The third column shows the plug-in’s version number. When trying to determine that you have the most current version of a plug-in, please refer to the version number listed in this column.

Enabling and Disabling Plug-ins.

To enable or disable any individual plug-in, simply move the file into or out of the folder which contains the APID ToolAssistant plug-in. One simple solution would be to create two folders within your plug-in folder. Name one “API”, and the other “API disabled”. You can then easily move files back and forth.

The APID ToolAssistant is like any other plug-in, and InDesign must be restarted when it is installed or removed. However, the rest of the plug-ins do not require a restart of InDesign when they are installed or removed. Newly installed plug-ins are available in documents when they are opened. If there are open documents when you install any of the *.spln files, those documents should be closed and reopened.

Please note: In-Tools plug-ins are unique, in that menu items will not appear until a document is opened. The plug-ins will appear in the plug-in list in the “About” window, but menu items only appear after a document is opened or created.

Purchasing Licenses and Activation

There are two ways to purchase In-Tools plug-ins: They can be purchased from the In-Tools web site prior to activation, or they can be purchased directly from within InDesign. If the plug-ins are purchased from the web site,

Drop Words

you will establish a login and password for activation at the time of purchase. If you purchase the plug-ins from within InDesign, the payment and activation both occur simultaneously. If you plan to purchase a plug-in package, or would like to purchase a number of plug-ins in one transaction, you should purchase them from the In-Tools web site before you initiate the activation process.

No matter how you purchase the plug-ins, the process from within InDesign is the same:

1. Select the plug-in you would like to activate.
2. Click “Get License”. This will take you to the log-in page of the In-Tools web site.

The screenshot shows a web interface with two main sections. The top section is titled "Customer Login" and contains a light blue box with the text "Please login using your email address and password to continue." Below this text are two input fields: "Email Address:" and "Password:". A "Login" button is positioned below the password field. The bottom section is titled "If you do not yet have an In-Tools account, create one below." and contains a light blue box with the text "Please enter your email address and choose a password. You will use this password to login to your account in order to install a license from within InDesign." Below this text are four input fields: "Name/Company:", "Email Address:", "Choose a Password:", and "Confirm Password:". A "Submit" button is positioned below the "Confirm Password" field.

If you already have an In-Tools account, fill in your login and password. Otherwise create an account now. If you already paid for your plug-ins, make sure you fill in the login information you provided at the time of purchase. You *must* provide a valid e-mail address or you might not receive your license file.

Drop Words

3. If you have not yet paid for the plug-in you will be taken to a PayPal payment page. On successful completion of the payment, you will be returned to the log-in page.
4. After successfully completing the log-in procedure, you will either get a link to download a license file, or you will receive one by e-mail (depending on various factors). Please allow one to two business days to receive an e-mail with the license file. The license file is specific to the installation from within which you have activated the license. It will not work on a different installation, even with the same serial number. If you need to use In-Tools plug-ins with more than one installation of InDesign, you will need to purchase an additional license for each installation.
5. Once you have your license file, go back to the “About” window in InDesign, select the plug-in you are activating and click on “Import License File”. Locate the file on your hard drive and click “Open”. The status next to your plug-in will change to “Licensed”.

Please note: After the trial period of In-Tools plug-ins expire, they will only work if *both* the In-Tools plug-in *and* the APID ToolAssistant is licensed. Only one license of the APID ToolAssistant is required per installation of InDesign. If you are not sure whether your installation of the APID ToolAssistant is licensed, make sure you purchase the plug-in using the “Get License” button. The In-Tools activation software will automatically determine if you require the license for APID, and create a double license if necessary.

Drop Words #1

There are two versions of the drop words function available using the *Drop Words* plug-in. They are named “Drop Words”, and “Drop Words 2”. The

Drop Words

setup and usage of the two versions are very different and will be explained separately.

Setup

Drop Words uses paragraph styles as the basis for creating the drop words. You must set up your document with styles for the drop words to properly function. “Drop Words #1” creates drop words using the standard drop caps function of InDesign. To properly create the drop words, the drop caps settings in your paragraph styles must be properly set up. The paragraph style should have the drop caps set to drop two lines. The number of characters set to drop is unimportant. It will be adjusted to the correct number of characters by *Drop Words*.

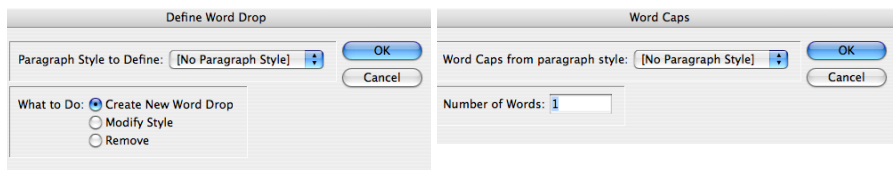
To ensure that the first word(s) retain the proper size and vertical position, the paragraph style should be set up using a character style for the drop cap. The drop cap character style should be a reduced size. The exact size would depend upon the point size and leading of the paragraph. Additionally, the baseline shift will need to be moved up.

Note: The size of the drop cap characters can be reduced by either changing the point size, or by using glyph scaling. The glyph scaling method will work in CS and CS2. In CS3, there is a bug, which does not allow applying the glyph scaling in a drop cap, so the point size must be changed instead.

Running Drop Words #1

Before applying the drop words in a document, you must select which paragraph styles should have the drop words applied. The styles to receive the drop words can be added, modified, or removed. Here’s the dialogs for selecting the styles:

Drop Words



In the first dialog, for each paragraph style to receive the drop words, click “Create New Word Drop”. If you would like to modify an existing definition, select the appropriate style, and click “Modify”. Creating a new drop word, or modifying an existing one, will bring up the second dialog. The options for setting the drop word definitions are very straight-forward. Select the paragraph style, and the number of words to drop.

Once all the styles are set up, apply the drops to the specified number of words, by simply selecting: API ➔ Drop Words ➔ Run Drop Words. This will update all the paragraphs in the document.

Please note: All settings applied by Drop Words #1 are static. When the drop words are applied, the paragraph styles will appear as overridden. (They will have the little “plus” sign near the style name.) Clearing overrides will undo the effects of Drop Words. Additionally, changes to the drop word text will not cause a dynamic update. Either one of these situations necessitate running Drop Words again.

Drop Words #2

Drop Words 2 is a complete rewrite on the concept of drop words. It works using an entirely different method, and requires a totally different setup. The reason we included both functions, is there are advantages to both ways. (Although the advantages to the second method probably outweigh the disadvantages — you decide!)

Drop Words

The advantages to Drop Words #1 are as follows:

- Drop words #1 can be run on text before it is properly placed. It doesn't matter if the text is over-set, etc. Drop Words #2 requires the text to be set. At the very minimum it must not be overset, but ideally it should be set in its final formatting before creating the drop words.
- Drop Words #1 can be vertically justified using InDesign's built in vertical justification, while Drop Words #2 cannot. To vertically justify text formatted using Drop Words #2, you can use our Proper VJ plug-in instead.
- Drop Words #1 can be created on the whole document at once (assuming the styles are previously chosen), while Drop Words #2 must be run for each style separately.
- Drop Words #2 will only work using CS2 and higher.

The advantages of Drop Words #2 are as follows:

- The spacing between the drop word and the rest of the text is adjusted to match the spacing in the rest of the line. Spaces in drop caps (used in Drop Words #1) are fixed spaces, and not adjusted by the justification of the paragraph. The flexible spacing in Drop Words #2 creates a much more unified look.
- The drop words in Drop Words #2 are dynamic. This means that editing the drop words will automatically adjust the size of the drop words. Deleting the drop word text will remove the drop words entirely.
- Drop Words #2 does not override the paragraph style settings, so clearing overrides will not effect the drop words.
- Any drop caps bugs in InDesign (and there are quite a few...) will affect Drop Words #1 but not Drop Words #2.
- The drop words in Drop Words #2 require no resizing or baseline shifting.

Drop Words

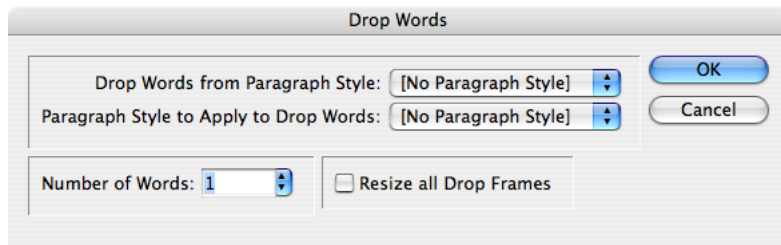
Setup

Since drop words are only used in right to left text, *Drop Words 2* was designed to function on right-to-left paragraphs only. If you try to run it on left-to-right paragraphs, nothing will happen.

To run *Drop Words 2*, you must set up two different paragraph styles. The first style will apply formatting to the parent paragraph, while the second one will apply the formatting to the drop words alone. If there is more than one word in the drop word, the second style can be set up to apply all the formatting to the different words using nested styles. The second style should be set up using the true point size and baseline position (unlike Drop Words #1).

Using Drop Words 2

To create “Drop Words 2” drop words, simply select: API → Drop Words → Run Drop Words 2. This must be repeated for each paragraph style.



Above is the dialog used for creating “Drop Words 2” drop words. The options are self-explanatory. The top drop down list is for selecting the parent paragraph which should receive the drop words. The second drop down list is for selecting the paragraph style to apply to the words which are to be dropped. In the “Number of Words” input field, select the number of words to drop. “The Resize all Drop Frames” option will force an update on all

Drop Words

existing drop words in the selected style. It is not usually necessary, but the option offers a way to force the re-flow.

Drop Word Re-formatting

Once the drop words are created, the size of the drop will be adjusted automatically any time the drop words are edited. Depending on the number of drop words, and the processor speed of the computer, the updates can take some time. If the text is reformatted in a way that affects a number of drop words, you will be prompted to okay the updates. If you cancel the updates, make sure to select “Force Update” to fix the spacing (and possibly overset drop words). You can force the update by selecting API ➤ Drop Words ➤ Force Update Drop Words 2.

Please note: Do to an unresolved issue with the Drop Words plug-in, it is possible to sometimes be prompted more than once in rapid succession after changing formatting. If there was only one change of formatting, it is safe to dismiss all prompts following the first one.

Removing Drop Words

The drop words are created as inline frames in the story stream. The text of the drop words themselves are actually a separate story. If the text is exported to be edited in an external program, the drop words must be removed first. To remove the drop words simply select API ➤ Drop Words ➤ Undo Drop Words 2. You will have the option of removing the drop words from either the whole document, or only from a specific paragraph style. To remove a drop word in a single location, simply select all the text in the drop frame, cut it (which will cause the containing frame to be removed), and paste the text back into the containing paragraph.

Drop Words

Addendum

What is “APID ToolAssistant”?

Classically, there are only two ways to automate InDesign. One way is by scripting. Scripts are a series of commands written in one of the three supported scripting languages — AppleScript for the Macintosh, Visual Basic for Windows, or ExtendScript for both platforms. ExtendScript is Adobe’s version of javascript. For scripts to run, they must be placed in the application script folder and explicitly run. For automation to be truly automatic, it requires “event processing”. This means that certain events trigger specific processes to take place. There is limited event-triggered scripting available in CS3.

To achieve true integration, plug-ins must be programmed using C++. Developing C++ plug-ins is a very involved, and lengthy process. APID ToolAssistant is a plug-in which allows very fine grained event processing using ExtendScript. It allows for creation of advanced plug-ins in a fraction of the time required when programming using C++. It also aids in the creation of hybrid plug-ins which mix ExtendScript and C++ for maximum efficiency.

Without the APID ToolAssistant, it would not have been possible to create the collection of plug-ins we offer in the same amount of development time. This increased programming efficiency means more functionality for the end user and lower prices.

Additionally, APID ToolAssistant offers the ability to attach scripts to specific objects. These attached scripts can be run automatically when triggered by specific events. Anyone who has a licensed version of the APID ToolAssistant plug-in installed can create and use these attached scripts. There

Drop Words

are also additional scripting properties and methods which are usable by scripters. For more information see Rorohiko's web site.

Drop Words

Acknowledgements

We wish to thank the many people who have helped make In-Tools plug-ins possible.

To those who give graciously of their time and expertise on the InDesign scripting forum: thank you for introducing us to automating within InDesign. Most specifically, Dave Saunders, Olav Kvern, and Peter Kahrel.

To Kris Coppieters, thank you for your incredible support throughout the entire development process. Your help with product improvements and with coding tips and techniques has been incredible. Your support has been above and beyond what we could have reasonably expected. It has really been a pleasure working together. Thank you.

To all our beta testers, thank you for the valuable input which helped shaped our plug-ins. To Brad Walrod: a special thank you for your unrelenting comments and suggestions. To Peter Gold and Raphael Freeman: thank you for your many useful suggestions.

Drop Words

License Agreement

Please read the following document carefully!

This is a legal agreement (the Agreement) between you and Print Israel LLC (In-Tools), the developer of the In-Tools software. This Agreement pertains to your use of the In-Tools software and documentation which are provided to you by In-Tools (collectively, the Software). By copying, installing, or otherwise using the Software, you accept all the terms and provisions of the Agreement.

Terms of Use

The provisions of the [In-Tools Privacy Policy](#) are incorporated herein and made a part hereof.

License

This Agreement grants you a personal, non-exclusive, non-transferable, non-sublicensable right to use one copy of the Software for use on a single computer and/or workstation for each license that you purchase. You may try the Software before purchasing a license, for the specified amount of time in the materials accompanying the Software. YOU UNDERSTAND AND AGREE THAT BY USING THE TRIAL SOFTWARE, AFTER THE AMOUNT OF TIME YOU MAY NOT BE ABLE TO CONTINUE TO USE THE SOFTWARE UNLESS YOU PURCHASE A LICENSE.

In-Tools reserves all rights in the Software not expressly granted herein, including without limitation ownership and proprietary rights.

License Restrictions

You may not reverse engineer, decompile or disassemble the Software. The restrictions contained herein apply equally to any updates that may be provided to you by In-Tools.

Intellectual Property Rights and Third Party Materials

All service marks, logos, trade names, trade dress, and trademarks of In-Tools (collectively Marks) are the exclusive property of In-Tools and nothing in this Agreement

Drop Words

shall grant you the license to use such Marks. All intellectual property rights in the Software are owned exclusively by In-Tools and are protected by United States of America copyright laws and international copyright treaty provisions. Any violation of the terms set forth herein is expressly prohibited by law and may result in severe civil and criminal penalties.

Disclaimer of Warranties

ALL SOFTWARE PROVIDED BY IN-TOOLS ARE PROVIDED AS IS. IN-TOOLS AND ITS AGENTS, PARTNERS, OR EMPLOYEES MAKE NO REPRESENTATION OR WARRANTY TO YOU OR ANY OTHER PERSON OR ENTITY, WHETHER EXPRESS, IMPLIED, OR STATUTORY, AS TO THE DESCRIPTION, QUALITY, TITLE, NON-INFRINGEMENT, MERCHANTABILITY, COMPLETENESS, OR FITNESS FOR A PARTICULAR USE OR PURPOSE AS TO THE SOFTWARE PROVIDED TO YOU, OR AS TO ANY OTHER MATTER, ALL SUCH WARRANTIES HEREBY BEING EXPRESSLY EXCLUDED AND DISCLAIMED.

NEITHER IN-TOOLS NOR ANY OF ITS AGENTS, PARTNERS, OR EMPLOYEES WARRANTS THAT THE SOFTWARE OR SERVICES ARE ERROR FREE OR WILL OPERATE WITHOUT CAUSING LOSS OR INTERRUPTION YOUR COMPUTER USAGE OR DATA. YOU ASSUME TOTAL RESPONSIBILITY AND RISK FOR YOUR USE OF THE SOFTWARE.

Limitation of Liability

IN NO EVENT SHALL IN-TOOLS, ITS AFFILIATES, SUBSIDIARIES, PARENT COMPANIES, AGENTS, NETWORK SERVICE PROVIDERS, PARTNERS, OR EMPLOYEES BE LIABLE TO YOU OR ANY THIRD PARTY IN ANY RESPECT FOR ANY COSTS OR DAMAGES ARISING EITHER DIRECTLY OR INDIRECTLY FROM THE USE OF IN-TOOLS SOFTWARE INCLUDING WITHOUT LIMITATION ANY ACTUAL, INCIDENTAL, CONSEQUENTIAL, EXEMPLARY, PUNITIVE, RELIANCE OR SPECIAL DAMAGES, OR FOR ANY LOSS OF REVENUE, PROFITS, USE, DATA, GOODWILL OR BUSINESS OP-

Drop Words

PORTUNITIES OF ANY KIND OR NATURE WHATSOEVER, ARISING IN ANY MANNER FROM ANY CAUSE OF ACTION OR CLAIM RELATING TO THIS AGREEMENT, TO THE SERVICES PROVIDED BY IN-TOOLS OR TO THE USE OF THE SOFTWARE. THIS LIMITATION OF LIABILITY APPLIES EQUALLY TO ANY THIRD PARTIES WITH WHOM IN-TOOLS ENTERS INTO A BINDING AGREEMENT TO MARKET, DISPLAY AND/OR DISTRIBUTE THE SOFTWARE TO END USERS AND SUCH THIRD PARTIES SHALL NOT BE LIABLE TO YOU OR ANY OTHER THIRD PARTY FOR ANY OF THE DAMAGES SET FORTH ABOVE.

Export Control Laws.

You agree to comply with all laws, rules and regulations applicable to the export of the Software. Specifically, you shall not export, re-export or transship the Software, or the direct product thereof, in violation of any United States laws and regulations which may from time to time be applicable. None of the Software or underlying information or technology may be downloaded or otherwise exported or re-exported (i) into, or to a national or resident of, Cuba, Iran, Iraq, Libya, North Korea, Sudan, Syria or any other country to which the U.S. has embargoed goods; or (ii) to anyone on the U.S. Treasury Department's list of Specially Designated Nationals or the U.S. Commerce Department's Table of Denial Order. By downloading or using the Software, you are agreeing to the foregoing and you are representing and warranting that you are not located in, under the control of, or a national or resident of any such country or on any such list.

Jurisdiction and Other Provisions

This Agreement and the relationship between In-Tools and you shall be governed in accordance with the laws of the State of New York. Any dispute between you and In-Tools regarding this Agreement will be subject to the exclusive jurisdiction of the state and federal courts in the State of New York. You agree to submit to exclusive jurisdiction in the State of New York, and you expressly waive all defenses to jurisdiction.

Drop Words

This Agreement is the entire agreement between you and In-Tools relating to your use of the Software and supersedes any other communications or advertising with respect to the Software. If any provision of this Agreement is held invalid, the remainder of this Agreement will continue in full force and effect. In-Tools failure to insist upon or enforce strict performance of any provision of this Agreement shall not be construed as a waiver of any provision or right. Neither the course of conduct between the parties nor trade practice shall act to modify any provision of this Agreement. In-Tools may assign its rights and duties under this Agreement to any party at any time without notice to you.

Modifications of Agreement

In-Tools may modify this Agreement at any time without providing notice to you. Such modification will be made by posting a revised agreement on its web site and such modification shall be deemed effective immediately upon posting of the modified Agreement. Your continued access or use of the Software or Services shall be deemed your acceptance of the modified Agreement. You agree to check our web site periodically to review such modifications.

Termination or Modifications of Software

You may terminate this Agreement at any time. The In-Tools may immediately terminate the Agreement if you breach any representation, warranty, agreement or obligation contained or referred to in the Agreement. Upon termination, you must dispose of the Software and all copies or versions of the Software by destroying the Software. In-Tools reserves the right to modify the Software at any time without providing notice to you. In-Tools right to modify the Software applies to all or any aspect of the Software.

YOU ACKNOWLEDGE THAT YOU HAVE READ THIS AGREEMENT AND UNDERSTAND IT AND THAT, BY USING THE SOFTWARE, WEB SITE, YOU AGREE TO BE BOUND BY ITS TERMS AND CONDITIONS.