

Multi-lingual Tools

**CS2/CS3
InDesign Plug-in**

version 1.0

last revision: May 18, 2008

Multi-Lingual Tools

Contents

- 3 What is Multi-Lingual Tools?**
- 4 Installation**
Enabling and Disabling Plug-ins.
- 6 Purchasing Licenses and Activation**
- 8 Apply Hebrew Character Style**
- 10 Apply Latin Character Style**
- 11 Straighten Quotes**
- 12 Switch Story Direction**
- 12 Number by Spread**
Undoing Spread Numbering
- 13 Addendum**
What is “APID ToolAssistant”?
- 15 Acknowledgements**
- 16 License Agreement**

Multi-Lingual Tools

What is Multi-Lingual Tools?

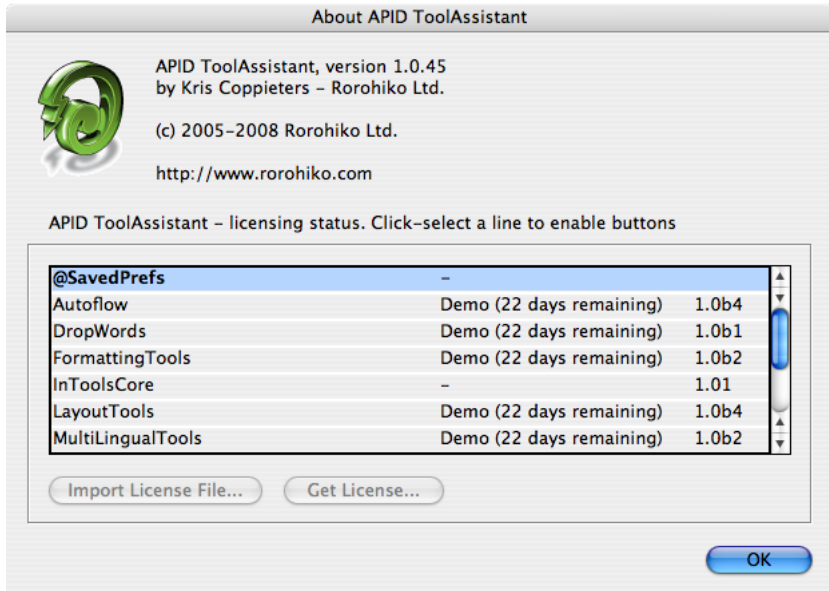
Multi-Lingual Tools is an ME-specific plug-in which addresses special multi-lingual needs. *Multi-Lingual Tools* is included free with every copy of InDesign purchased on the In-Tools website.

Currently *Multi-Lingual Tools* includes the following functions:

1. **Apply Hebrew Character Style:** This will apply a user-defined character style for Hebrew text within a non-Hebrew paragraph.
2. **Apply Latin Character Style:** This will apply a user-defined character style for text which uses the “Latin” writing script within a non-Latin paragraph. (“Latin” includes: English, Spanish, French, etc.)
3. **Straighten Quotes:** This is for making quotes “dumb”. Useful for languages which don’t use curly quote, such as Hebrew.
4. **Switch Story Direction:** This provides a menu item for reversing story direction. The menu item makes it possible to assign a keyboard shortcut to reverse the direction from right to left and left to right.
5. **Create Spread Numbering:** This creates “spread numbering” in which both pages on a spread will be assigned the same number. The numbers will only increase every other page.

Multi-Lingual Tools

Installation



Multi-Lingual Tools is different than most plug-ins. It was developed using a product called “APID ToolAssistant” created by Rorohiko. There is a central controller provided by Rorohiko which does a lot of the low-level processing. *If you are interested in the technology behind the development, you can read the addendum in the back of the manual.*

There are four different files which must be installed for *Multi-Lingual Tools* to function properly:

1. APIDToolAssistantCSx.xxx (the exact name depends on your version)
2. @SavedPrefs.spln
3. InToolsCore.spln (version 1.01)
4. MultiLingualTools.spln.

All of these files need to be copied to InDesign’s plug-ins folder. They may be copied to a sub-folder, but they must all be in the same one!

Multi-Lingual Tools

Please note: APID ToolAssistant replaces an older version of the plug-in. In the past, there were two versions of the API plug-in distributed by Rorohiko. Active Page Items Developer (APID), was the version developed to work with externally developed plug-ins. The free Active Page Items Runtime (APIR), was for plug-ins developed internally at Rorohiko. If you have either of these two plug-ins installed, you must remove them and install the APID ToolAssistant instead. The older APIR or APID plug-ins will not work. You must have the most current version of the APID ToolAssistant installed (version 1.0.45).

Shown above is the “About” window of API. This window can be brought up in two ways: 1. Select InDesign ➔ About Plug-Ins ➔ Rorohiko Ltd. ➔ APID ToolAssistant... 2. API ➔ APID ToolAssistant...

In-Tools plug-ins do not show up separately in the “About Plug-Ins” menu. Information on installed In-Tools plug-ins are only displayed in the “About” window of API. If the plug-ins are properly installed you should see the displayed window (or the equivalent Windows version).

Please note the API version number near the top of the window. Your version number must say 1.0.45 or higher. Additionally it must say “APID ToolAssistant”. If it says “Active Page Item Developer” or “Active Page Item Runtime”, you have the wrong version installed. As mentioned above, both of these versions have been replaced with APID ToolAssistant.

When in doubt: search your plug-in folder for a file whose name contains “ActivePageItem”, and replace it with the new one.

In the “About” window, there is a list of all installed plug-ins and their status. The first column lists the plug-ins. The second column shows the license status. If the plug-in is licensed, “Licensed For APID” will be displayed. If the

Multi-Lingual Tools

plug-in is in demo mode, the word “Demo” will be displayed along with the number of days remaining until the plug-in expires. The third column shows the plug-in’s version number. When trying to determine that you have the most current version of a plug-in, please refer to the version number listed in this column.

Enabling and Disabling Plug-ins.

To enable or disable any individual plug-in, simply move the file into or out of the folder which contains the APID ToolAssistant plug-in. One simple solution would be to create two folders within your plug-in folder. Name one “API”, and the other “API disabled”. You can then easily move files back and forth.

The APID ToolAssistant is like any other plug-in, and InDesign must be restarted when it is installed or removed. However, the rest of the plug-ins do not require a restart of InDesign when they are installed or removed. Newly installed plug-ins are available in documents when they are opened. If there are open documents when you install any of the *.spln files, those documents should be closed and reopened.

Please note: In-Tools plug-ins are unique, in that menu items will not appear until a document is opened. The plug-ins will appear in the plug-in list in the “About” window, but menu items only appear after a document is opened or created.

Purchasing Licenses and Activation

There are two ways to purchase In-Tools plug-ins: They can be purchased from the In-Tools web site prior to activation, or they can be purchased directly from within InDesign. If the plug-ins are purchased from the web site,

Multi-Lingual Tools

you will establish a login and password for activation at the time of purchase. If you purchase the plug-ins from within InDesign, the payment and activation both occur simultaneously. If you plan to purchase a plug-in package, or would like to purchase a number of plug-ins in one transaction, you should purchase them from the In-Tools web site before you initiate the activation process.

No matter how you purchase the plug-ins, the process from within InDesign is the same:

1. Select the plug-in you would like to activate.
2. Click “Get License”. This will take you to the log-in page of the In-Tools web site.

The screenshot shows a web interface with two main sections. The top section, titled "Customer Login", has a light blue background and contains the text "Please login using your email address and password to continue." Below this are two input fields labeled "Email Address:" and "Password:", followed by a "Login" button. The bottom section, titled "If you do not yet have an In-Tools account, create one below.", also has a light blue background and contains the text "Please enter your email address and choose a password. You will use this password to login to your account in order to install a license from within InDesign." Below this are four input fields labeled "Name/Company:", "Email Address:", "Choose a Password:", and "Confirm Password:", followed by a "Submit" button.

If you already have an In-Tools account, fill in your login and password. Otherwise create an account now. If you already paid for your plug-ins, make sure you fill in the login information you provided at the time of purchase. You *must* provide a valid e-mail address or you might not receive your license file.

Multi-Lingual Tools

3. If you have not yet paid for the plug-in you will be taken to a PayPal payment page. On successful completion of the payment, you will be returned to the log-in page.
4. After successfully completing the log-in procedure, you will either get a link to download a license file, or you will receive one by e-mail (depending on various factors). Please allow one to two business days to receive an e-mail with the license file. The license file is specific to the installation from within which you have activated the license. It will not work on a different installation, even with the same serial number. If you need to use In-Tools plug-ins with more than one installation of InDesign, you will need to purchase an additional license for each installation.
5. Once you have your license file, go back to the “About” window in InDesign, select the plug-in you are activating and click on “Import License File”. Locate the file on your hard drive and click “Open”. The status next to your plug-in will change to “Licensed”.

Please note: After the trial period of In-Tools plug-ins expire, they will only work if *both* the In-Tools plug-in *and* the APID ToolAssistant is licensed. Only one license of the APID ToolAssistant is required per installation of InDesign. If you are not sure whether your installation of the APID ToolAssistant is licensed, make sure you purchase the plug-in using the “Get License” button. The In-Tools activation software will automatically determine if you require the license for APID, and create a double license if necessary.

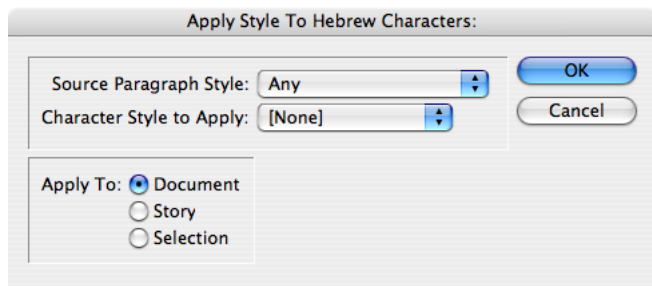
Apply Hebrew Character Style

A “writing script” is the set of characters used by the computer to compose text. Each writing script uses a unique set of characters. Each script is unique,

Multi-Lingual Tools

but a script can include more than one language. For example, the Hebrew script is used by Hebrew and Yiddish. The Latin script is used by English, Spanish, French, and many others. The “Apply Style” functions recognize characters based on their script, and apply character styles accordingly.

“Apply Hebrew Style” creates a Hebrew character style for Hebrew text. This function should be used when the main paragraph text is in a language other than Hebrew, and the Hebrew text needs its own formatting. It identifies any text belonging to the Hebrew writing script, and takes into consideration all Hebrew letters, *nikud* (vowel marks), and *taamei hamikra* (cantillation marks). Additionally, it makes all single and double quotes “dumb”, and applies the style to punctuation within Hebrew text. For example the statement: This is ספר “מאוד” מענין! becomes: This is ספר “מאוד” מענין! In this example the Hebrew style is styled with Fontbit David at a reduced size, the quotes within the Hebrew statement had the Hebrew style applied to it and were straightened. The exclamation point immediately after the Hebrew text retains its regular formatting. The character style should be set before running this utility.



The above dialog box shows the options for applying the style. In the “Source Paragraph Style” drop down list you can either select “Any” or a specific style. Choosing “Any” will apply the character style to any Hebrew text in

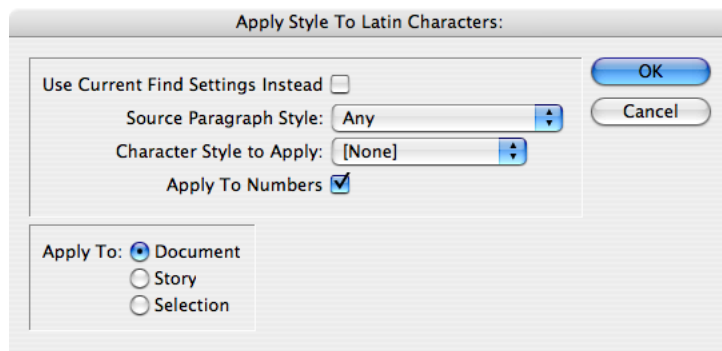
Multi-Lingual Tools

all the paragraphs of the specified range. Choosing a specific style will limit the application of the style to text styled by a specific paragraph style. Use the “Character Style to Apply” drop down list to select the character style to apply.

The second section in the dialog allows you to select the text range. The options are context sensitive. The options are context-sensitive. If there is nothing selected in the document, the only selectable range will be the document. If there is a story or part thereof selected in the document, the “story” radio button will appear. If there are at least two characters selected, the “Selection” radio button will appear as well. Selections can be either text or text frames.

Apply Latin Character Style

This option is similar to “Apply Hebrew Character Style”. It styles text belonging to the Latin script within a paragraph whose main language uses a different writing script.



The above dialog box shows the options for applying this style. Select “Use Current Find Settings Instead” to search by criteria such as color, character

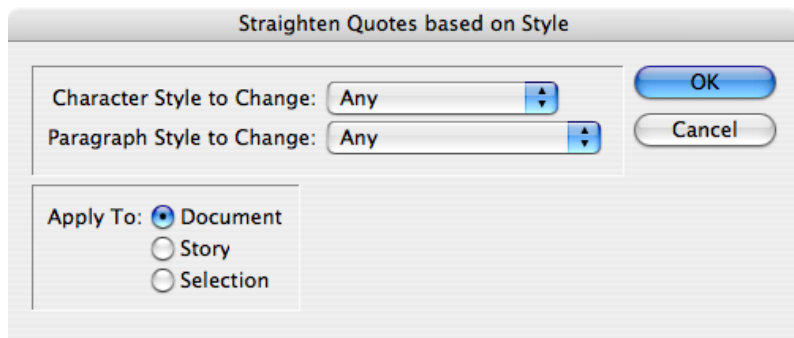
Multi-Lingual Tools

style, etc. The last find settings used in the application find and replace dialog will be used to find the text. *Please note: If the “Use Current Find Settings” is checked, the selection of the paragraph style is ignored.* Whether or not this box is checked the “Character Style To Apply” must be selected. If “Apply To Numbers” is selected, numbers within the Latin text will be styled with the selected character style.

The second section in the dialog allows you to select the text range. The options are context sensitive. The options are context-sensitive. If there is nothing selected in the document, the only selectable range will be the document. If there is a story or part thereof selected in the document, the “story” radio button will appear. If there are at least two characters selected, the “Selection” radio button will appear as well. Selections can be either text or text frames.

Straighten Quotes

Hebrew and perhaps other languages does not use curly quotes. Very often, curly quotes can creep into Hebrew text unintentionally. *Straighten Quotes* was created to deal with this issue.



Multi-Lingual Tools

The options in the above dialog box are self-explanatory. Select a character style, a paragraph style, both, or neither. You can also select the text range as in to the “Apply Character Style” dialogs.

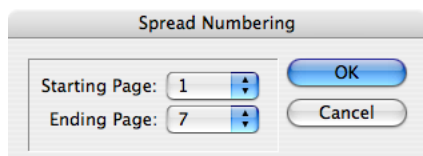
Switch Story Direction

Story direction in InDesign ME is determined by text tool used to draw the text frame containing the story. If the ME type tool is used, the story direction will be right-to-left. If the regular type tool is used, the story direction will be left-to-right. The importance of story direction is primarily in the direction of text flow in multi-column text frames. The story direction is set for the story as a whole, and not on a frame by frame basis.

Without this plug-in, InDesign ME allows story direction to be changed afterwards by selecting a different story direction in the Story Palette / Panel. It is a very inconvenient way to switch story direction, since the only other function of the Story Palette / Panel is the rarely accessed Optical Margin Setting. The “Switch Story Direction” option provides a convenient way to change the story direction. Since the command is a menu item, it allows you to create a keyboard shortcut make changing story direction even easier.

Number by Spread

This utility offers the option to increase page numbering once per spread instead of once per page. This is useful when both pages in a spread are needed to show the same page number.



Multi-Lingual Tools

By default, the starting page will be the first page in the document, and the ending page will be the last. These numbers can be set to any page in the document, thereby giving spread numbering to only part of the document.

Undoing Spread Numbering

Spread numbering can be undone as well. The numbers in the drop-down list will be the current page numbers — 1,1,2,2, and so on.

Addendum

What is “APID ToolAssistant”?

Classically, there are only two ways to automate InDesign. One way is by scripting. Scripts are a series of commands written in one of the three supported scripting languages — AppleScript for the Macintosh, Visual Basic for Windows, or ExtendScript for both platforms. ExtendScript is Adobe’s version of javascript. For scripts to run, they must be placed in the application script folder and explicitly run. For automation to be truly automatic, it requires “event processing”. This means that certain events trigger specific processes to take place. There is limited event-triggered scripting available in CS3.

To achieve true integration, plug-ins must be programmed using C++. Developing C++ plug-ins is a very involved, and lengthy process. APID ToolAssistant is a plug-in which allows very fine grained event processing using ExtendScript. It allows for creation of advanced plug-ins in a fraction of the time required when programming using C++. It also aids in the creation of hybrid plug-ins which mix ExtendScript and C++ for maximum efficiency.

Multi-Lingual Tools

Without the APID ToolAssistant, it would not have been possible to create the collection of plug-ins we offer in the same amount of development time. This increased programming efficiency means more functionality for the end user and lower prices.

Additionally, APID ToolAssistant offers the ability to attach scripts to specific objects. These attached scripts can be run automatically when triggered by specific events. Anyone who has a licensed version of the APID ToolAssistant plug-in installed can create and use these attached scripts. There are also additional scripting properties and methods which are usable by scripters. For more information see Rorohiko's web site.

Multi-Lingual Tools

Acknowledgements

We wish to thank the many people who have helped make In-Tools plug-ins possible.

To those who give graciously of their time and expertise on the InDesign scripting forum: thank you for introducing us to automating within InDesign. Most specifically, Dave Saunders, Olav Kvern, and Peter Kahrel.

To Kris Coppieters, thank you for your incredible support throughout the entire development process. Your help with product improvements and with coding tips and techniques has been incredible. Your support has been above and beyond what we could have reasonably expected. It has really been a pleasure working together. Thank you.

To all our beta testers, thank you for the valuable input which helped shaped our plug-ins. To Brad Walrod: a special thank you for your unrelenting comments and suggestions. To Peter Gold and Raphael Freeman: thank you for your many useful suggestions.

Multi-Lingual Tools

License Agreement

Please read the following document carefully!

This is a legal agreement (the Agreement) between you and Print Israel LLC (In-Tools), the developer of the In-Tools software. This Agreement pertains to your use of the In-Tools software and documentation which are provided to you by In-Tools (collectively, the Software). By copying, installing, or otherwise using the Software, you accept all the terms and provisions of the Agreement.

Terms of Use

The provisions of the [In-Tools Privacy Policy](#) are incorporated herein and made a part hereof.

License

This Agreement grants you a personal, non-exclusive, non-transferable, non-sublicensable right to use one copy of the Software for use on a single computer and/or workstation for each license that you purchase. You may try the Software before purchasing a license, for the specified amount of time in the materials accompanying the Software. YOU UNDERSTAND AND AGREE THAT BY USING THE TRIAL SOFTWARE, AFTER THE AMOUNT OF TIME YOU MAY NOT BE ABLE TO CONTINUE TO USE THE SOFTWARE UNLESS YOU PURCHASE A LICENSE.

In-Tools reserves all rights in the Software not expressly granted herein, including without limitation ownership and proprietary rights.

License Restrictions

You may not reverse engineer, decompile or disassemble the Software. The restrictions contained herein apply equally to any updates that may be provided to you by In-Tools.

Intellectual Property Rights and Third Party Materials

All service marks, logos, trade names, trade dress, and trademarks of In-Tools (collectively Marks) are the exclusive property of In-Tools and nothing in this Agreement

Multi-Lingual Tools

shall grant you the license to use such Marks. All intellectual property rights in the Software are owned exclusively by In-Tools and are protected by United States of America copyright laws and international copyright treaty provisions. Any violation of the terms set forth herein is expressly prohibited by law and may result in severe civil and criminal penalties.

Disclaimer of Warranties

ALL SOFTWARE PROVIDED BY IN-TOOLS ARE PROVIDED AS IS. IN-TOOLS AND ITS AGENTS, PARTNERS, OR EMPLOYEES MAKE NO REPRESENTATION OR WARRANTY TO YOU OR ANY OTHER PERSON OR ENTITY, WHETHER EXPRESS, IMPLIED, OR STATUTORY, AS TO THE DESCRIPTION, QUALITY, TITLE, NON-INFRINGEMENT, MERCHANTABILITY, COMPLETENESS, OR FITNESS FOR A PARTICULAR USE OR PURPOSE AS TO THE SOFTWARE PROVIDED TO YOU, OR AS TO ANY OTHER MATTER, ALL SUCH WARRANTIES HEREBY BEING EXPRESSLY EXCLUDED AND DISCLAIMED.

NEITHER IN-TOOLS NOR ANY OF ITS AGENTS, PARTNERS, OR EMPLOYEES WARRANTS THAT THE SOFTWARE OR SERVICES ARE ERROR FREE OR WILL OPERATE WITHOUT CAUSING LOSS OR INTERRUPTION YOUR COMPUTER USAGE OR DATA. YOU ASSUME TOTAL RESPONSIBILITY AND RISK FOR YOUR USE OF THE SOFTWARE.

Limitation of Liability

IN NO EVENT SHALL IN-TOOLS, ITS AFFILIATES, SUBSIDIARIES, PARENT COMPANIES, AGENTS, NETWORK SERVICE PROVIDERS, PARTNERS, OR EMPLOYEES BE LIABLE TO YOU OR ANY THIRD PARTY IN ANY RESPECT FOR ANY COSTS OR DAMAGES ARISING EITHER DIRECTLY OR INDIRECTLY FROM THE USE OF IN-TOOLS SOFTWARE INCLUDING WITHOUT LIMITATION ANY ACTUAL, INCIDENTAL, CONSEQUENTIAL, EXEMPLARY, PUNITIVE, RELIANCE OR SPECIAL DAMAGES, OR FOR ANY LOSS OF REVENUE, PROFITS, USE, DATA, GOODWILL OR BUSINESS OP-

Multi-Lingual Tools

PORTUNITIES OF ANY KIND OR NATURE WHATSOEVER, ARISING IN ANY MANNER FROM ANY CAUSE OF ACTION OR CLAIM RELATING TO THIS AGREEMENT, TO THE SERVICES PROVIDED BY IN-TOOLS OR TO THE USE OF THE SOFTWARE. THIS LIMITATION OF LIABILITY APPLIES EQUALLY TO ANY THIRD PARTIES WITH WHOM IN-TOOLS ENTERS INTO A BINDING AGREEMENT TO MARKET, DISPLAY AND/OR DISTRIBUTE THE SOFTWARE TO END USERS AND SUCH THIRD PARTIES SHALL NOT BE LIABLE TO YOU OR ANY OTHER THIRD PARTY FOR ANY OF THE DAMAGES SET FORTH ABOVE.

Export Control Laws.

You agree to comply with all laws, rules and regulations applicable to the export of the Software. Specifically, you shall not export, re-export or transship the Software, or the direct product thereof, in violation of any United States laws and regulations which may from time to time be applicable. None of the Software or underlying information or technology may be downloaded or otherwise exported or re-exported (i) into, or to a national or resident of, Cuba, Iran, Iraq, Libya, North Korea, Sudan, Syria or any other country to which the U.S. has embargoed goods; or (ii) to anyone on the U.S. Treasury Department's list of Specially Designated Nationals or the U.S. Commerce Department's Table of Denial Order. By downloading or using the Software, you are agreeing to the foregoing and you are representing and warranting that you are not located in, under the control of, or a national or resident of any such country or on any such list.

Jurisdiction and Other Provisions

This Agreement and the relationship between In-Tools and you shall be governed in accordance with the laws of the State of New York. Any dispute between you and In-Tools regarding this Agreement will be subject to the exclusive jurisdiction of the state and federal courts in the State of New York. You agree to submit to exclusive jurisdiction in the State of New York, and you expressly waive all defenses to jurisdiction.

Multi-Lingual Tools

This Agreement is the entire agreement between you and In-Tools relating to your use of the Software and supersedes any other communications or advertising with respect to the Software. If any provision of this Agreement is held invalid, the remainder of this Agreement will continue in full force and effect. In-Tools failure to insist upon or enforce strict performance of any provision of this Agreement shall not be construed as a waiver of any provision or right. Neither the course of conduct between the parties nor trade practice shall act to modify any provision of this Agreement. In-Tools may assign its rights and duties under this Agreement to any party at any time without notice to you.

Modifications of Agreement

In-Tools may modify this Agreement at any time without providing notice to you. Such modification will be made by posting a revised agreement on its web site and such modification shall be deemed effective immediately upon posting of the modified Agreement. Your continued access or use of the Software or Services shall be deemed your acceptance of the modified Agreement. You agree to check our web site periodically to review such modifications.

Termination or Modifications of Software

You may terminate this Agreement at any time. The In-Tools may immediately terminate the Agreement if you breach any representation, warranty, agreement or obligation contained or referred to in the Agreement. Upon termination, you must dispose of the Software and all copies or versions of the Software by destroying the Software. In-Tools reserves the right to modify the Software at any time without providing notice to you. In-Tools right to modify the Software applies to all or any aspect of the Software.

YOU ACKNOWLEDGE THAT YOU HAVE READ THIS AGREEMENT AND UNDERSTAND IT AND THAT, BY USING THE SOFTWARE, WEB SITE, YOU AGREE TO BE BOUND BY ITS TERMS AND CONDITIONS.