

Reflective Objects

**CS2/CS3
InDesign Plug-in**

version 1.0.1

last revision: July 7, 2008

Reflective Objects

Contents

3 What's A Reflective Object?

But Who Needs Them?

5 Installation

Enabling and Disabling Plug-ins.

8 Purchasing Licenses and Activation

10 Okay. So, How Do I Use It?

Basic Application of Settings:

Using Reflective Objects:

Other Settings Options:

Reflective Defaults:

Setting Object Styles:

Libraries

Book Files

Transferring Documents

17 Scripting

Applying Settings

Using Event Handler Codes

19 Addendum

What is "APID ToolAssistant"?

21 Acknowledgements

22 License Agreement

Reflective Objects

What's A Reflective Object?

The need for reflective objects might not be apparent at first, but we are confident that once you start using them, you will not know how you worked without them!

Simply put: a reflective object is any page item which keeps its page position relative to the spine (whether it's a text frame, graphic, etc.).

Even guides can be set as reflective, so you don't need to create separate masters just because you need a different set of guides in part of your document.

But Who Needs Them?

When laying out documents with facing pages, design elements which have a distinct position relative to the spine are usually present. For example, look at the placement of the number tabs in this manual. While in many situations, creating design elements on master pages is ideal, often it is not. A primary example is master text frames.

The problem with these elements become apparent when pages are added or removed. Very often a recto page becomes a verso page or vice versa. This causes the layout to become reversed. Correcting these pages can be an extremely time consuming process! Defining these objects as "reflective" causes them to take a mirrored position when the page changes sides.

To illustrate this point, we are including two screen shots of a document which uses *Reflective Objects* for positioning graphic elements in the side bar area. In this document, these elements couldn't be created as anchored objects because of the text wrap applied to many of them. When the top right

Reflective Objects

page was removed from the figure on the left, the layout on all the following pages was automatically adjusted as shown in the figure on the right. A special thank you to Brad Walrod for providing these illustrations.



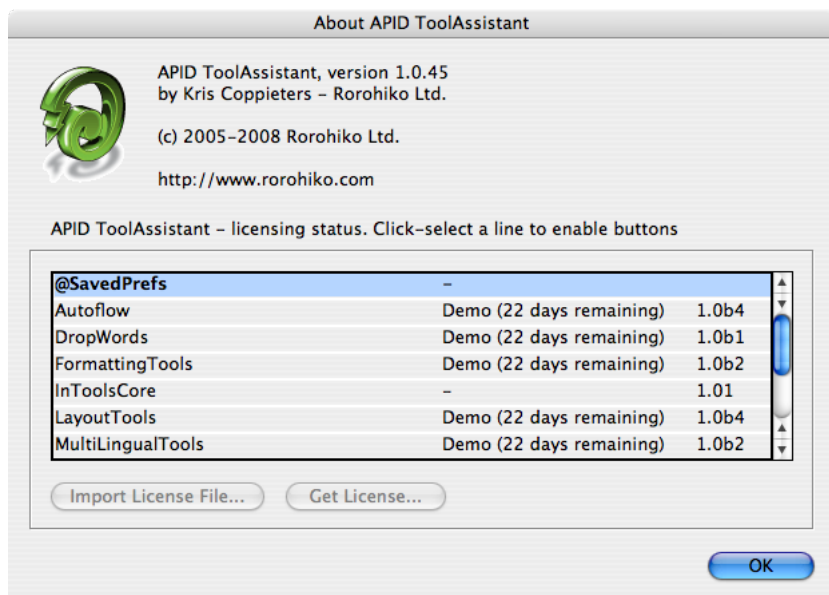
Before

After

Reflective Objects

Another use for reflective objects is simplifying symmetrical design. Design elements which appear in symmetrical positions on both recto and verso pages only need to be created once. After creating them on one side, they can be copied to the facing page en mass, and each object will take an opposing position to its original! The page number tabs and headers in this manual for example, were created using this method.

Installation



Reflective Objects is different than most plug-ins. It was developed using a product called “APID ToolAssistant” created by Rorohiko. There is a central controller provided by Rorohiko which does a lot of the low-level process-

Reflective Objects

ing. If you are interested in the technology behind the development, you can read the addendum in the back of the manual.

There are four different files which must be installed for *Reflective Objects* to function properly: 1. APIDToolAssistantCSx.xxx (the exact name depends on your version) 2. @SavedPrefs.spln 3. InToolsCore.spln (version 1.0.4) 4. ReflectiveObjects.spln (version 1.0.1).

All of these files need to be copied to InDesign's plug-ins folder. They may be copied to a sub-folder, but they must all be in the same one!

Please note: APID ToolAssistant replaces an older version of the plug-in. In the past, there were two versions of the API plug-in distributed by Rorohiko. Active Page Items Developer (APID), was the version developed to work with externally developed plug-ins. The free Active Page Items Runtime (APIR), was for plug-ins developed internally at Rorohiko. If you have either of these two plug-ins installed, you must remove them and install the APID ToolAssistant instead. The older APIR or APID plug-ins will not work. You must have the most current version of the APID ToolAssistant installed (version 1.0.45).

Shown above is the "About" window of API. This window can be brought up in two ways: 1. Select InDesign → About Plug-Ins → Rorohiko Ltd. → APID ToolAssistant... 2. API → APID ToolAssistant...

In-Tools plug-ins do not show up separately in the "About Plug-Ins" menu. Information on installed In-Tools plug-ins are only displayed in the "About" window of API. If the plug-ins are properly installed you should see the displayed window (or the equivalent Windows version).

Reflective Objects

Reflective Objects

Please note the API version number near the top of the window. Your version number must say 1.0.45 or higher. Additionally it must say “APID ToolAssistant”. If it says “Active Page Item Developer” or “Active Page Item Runtime”, you have the wrong version installed. As mentioned above, both of these versions have been replaced with APID ToolAssistant.

When in doubt: search your plug-in folder for a file whose name contains “ActivePageItem”, and replace it with the new one.

In the “About” window, there is a list of all installed plug-ins and their status. The first column lists the plug-ins. The second column shows the license status. If the plug-in is licensed, “Licensed For APID” will be displayed. If the plug-in is in demo mode, the word “Demo” will be displayed along with the number of days remaining until the plug-in expires. The third column shows the plug-in’s version number. When trying to determine that you have the most current version of a plug-in, please refer to the version number listed in this column.

Enabling and Disabling Plug-ins.

To enable or disable any individual plug-in, simply move the file into or out of the folder which contains the APID ToolAssistant plug-in. One simple solution would be to create two folders within your plug-in folder. Name one “API”, and the other “API disabled”. You can then easily move files back and forth.

The APID ToolAssistant is like any other plug-in, and InDesign must be restarted when it is installed or removed. However, the rest of the plug-ins do not require a restart of InDesign when they are installed or removed. Newly installed plug-ins are available in documents when they are opened. If there

Reflective Objects

are open documents when you install any of the *.spln files, those documents should be closed and reopened.

Please note: In-Tools plug-ins are unique, in that menu items will not appear until a document is opened. The plug-ins will appear in the plug-in list in the “About” window, but menu items only appear after a document is opened or created.

Purchasing Licenses and Activation

There are two ways to purchase In-Tools plug-ins: They can be purchased from the In-Tools web site prior to activation, or they can be purchased directly from within InDesign. If the plug-ins are purchased from the web site, you will establish a login and password for activation at the time of purchase. If you purchase the plug-ins from within InDesign, the payment and activation both occur simultaneously. If you plan to purchase a plug-in package, or would like to purchase a number of plug-ins in one transaction, you should purchase them from the In-Tools web site before you initiate the activation process.

No matter how you purchase the plug-ins, the process from within InDesign is the same:

1. Select the plug-in you would like to activate.
2. Click “Get License”. This will take you to the log-in page of the In-Tools web site.

Reflective Objects

Customer Login

Please login using your email address and password to continue.

Email Address:

Password:

If you do not yet have an In-Tools account, create one below.

Please enter your email address and choose a password. You will use this password to login to your account in order to install a license from within InDesign.

Name/Company:

Email Address:

Choose a Password:

Confirm Password:

If you already have an In-Tools account, fill in your login and password. Otherwise create an account now. If you already paid for your plug-ins, make sure you fill in the login information you provided at the time of purchase. You *must* provide a valid e-mail address or you might not receive your license file.

3. If you have not yet paid for the plug-in you will be taken to a PayPal payment page. On successful completion of the payment, you will be returned to the log-in page.

4. After successfully completing the log-in procedure, you will either get a link to download a license file, or you will receive one by e-mail (depending on various factors). Please allow one to two business days to receive an e-mail with the license file. The license file is specific to the installation from within which you have activated the license. It will not work on a different installation, even with the same serial number. If you need to use In-Tools plug-ins with more than one installation of InDesign, you will need to purchase an additional license for each installation.

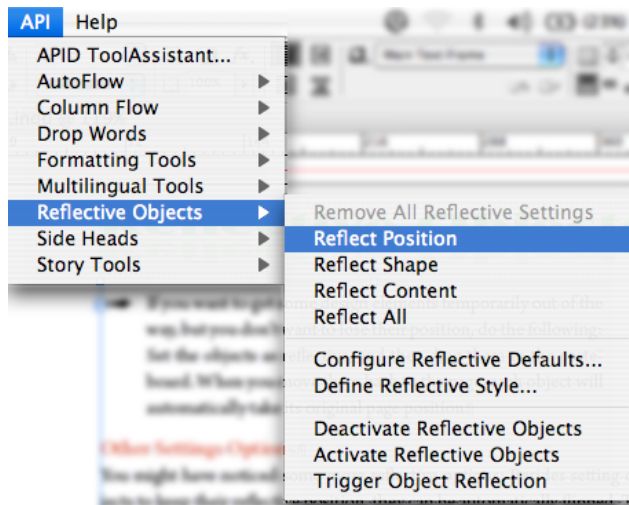
Reflective Objects

5. Once you have your license file, go back to the “About” window in InDesign, select the plug-in you are activating and click on “Import License File”. Locate the file on your hard drive and click “Open”. The status next to your plug-in will change to “Licensed”.

Please note: After the trial period of In-Tools plug-ins expire, they will only work if *both* the In-Tools plug-in *and* the APID ToolAssistant is licensed. Only one license of the APID ToolAssistant is required per installation of InDesign. If you are not sure whether your installation of the APID ToolAssistant is licensed, make sure you purchase the plug-in using the “Get License” button. The In-Tools activation software will automatically determine if you require the license for APID, and create a double license if necessary.

Okay. So, How Do I Use It?

Basic Application of Settings:



Reflective Objects

Reflective Objects

Using *Reflective Objects* is very easy. Objects can be set either by selecting the menu command, or by right clicking, and selecting from the context menu. Simply select an object (or multiple objects), and select API ➔ Reflective Objects ➔ Reflect Position. Removing settings are done the same way.

Using Reflective Objects:

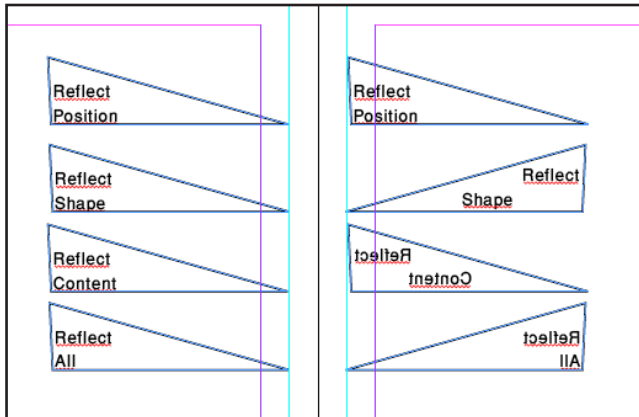
Once an object is set to reflect, it can be moved around like any other object. The plug-in works in the background keeping track of its position. If the object is moved to an opposing page—either manually, or by adding/removing pages — it will immediately jump to the correct position. The same is true for objects which are copied and pasted.

■➡ If you want to get some design elements temporarily out of the way, but you don't want to lose their position, do the following: Set the objects as reflective, and then drag them to the paste-board. When you move them back to the page, each object will automatically take its original page position.

Other Settings Options:

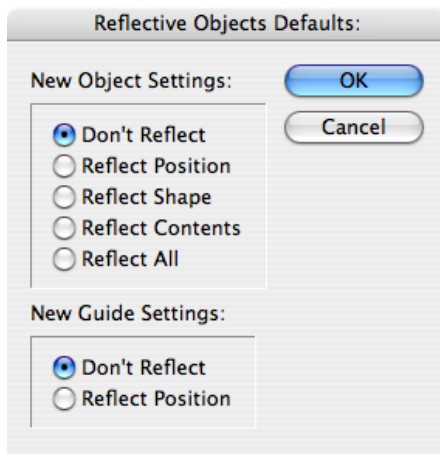
You might have noticed some more reflective options: Besides setting objects to keep their reflective position, they can be automatically flipped. The four reflective settings are as follows: *Reflect Positions* keeps the position. *Reflect Shape* will flip the frame but not the content. *Reflect Content* will flip the content but not the frame. *Reflect All* will flip both the frame and the content.

Reflective Objects



In the above screen shot, the items on the left are the original objects and a guide. The objects on the right have been reflected by duplicating the left page. Quite obviously, reflecting content is much more appropriate for objects than for text!

Reflective Defaults:



Reflective Objects

Reflective Objects

Reflective settings can be set for newly created objects by changing the “Reflective Object Defaults”. In the screen shot above, notice that the defaults can be set separately for objects and guides. Object defaults can be set to one of five settings. There are only two settings for guides, as they don’t have shape or content.

Default settings only affect new objects created after changing the default settings. Existing objects remain with whatever settings were applied.

Object Style settings (see below) supersede the default settings. This means that if your default object style (the one applied when creating new objects) has a reflective property, the setting of the object style will be used.

Setting Object Styles:

The full power of reflective objects can only be realized by using object styles.

The screenshot shows a dialog box titled "Define Reflective Object Styles". It contains the following elements:

- Object Style to Define:** A dropdown menu currently set to "[None]".
- With Settings:** A dropdown menu currently set to "No Settings".
- Apply to Existing Objects?** A checkbox that is checked.
- Buttons:** "OK" and "Cancel" buttons on the right side.
- Existing Settings:** A section with five rows, each with a label and a dropdown menu:
 - Don't Reflect: No Styles
 - Reflect Position: No Styles
 - Reflect Shape: No Styles
 - Reflect Contents: No Styles
 - Reflect All: No Styles

Reflective Objects

Reflective Objects

In the above dialog you will see two distinct sections. The top half is where you define the settings, while the bottom half is strictly informational. (Changing the selections in the drop down lists does nothing.)

To define reflective settings for an object style:

1. Select your style from the top drop-down list “Object Style to Define”.
2. Select the appropriate setting from the second drop down list “With Settings”.

Please note: There is a distinct difference between “No Settings”, and “Don’t Reflect”. If “No Settings” is selected, new objects created with the selected style will have the settings defined as your defaults. If “Don’t Reflect” is selected, new objects will not reflect regardless of your defaults. Additionally, applying an object style which is set to “Don’t Reflect” will remove any reflective settings, while applying ones set to “No Settings” will preserve prior settings.

3. To apply the settings to existing objects of the selected style, check “Apply to Existing Objects”. If you just want to create settings for new objects, uncheck the option.

Libraries

Reflective objects can be saved in a library, and will retain their reflective settings. However, they will not retain their position information when placed in a document. After placing objects from a library, the new position information may not be recorded for up to a second or so. Make sure not to move newly placed objects for a second or two.

Reflective Objects

Reflective Objects

Book Files

When changing page numbers in book files, the page sides might change. To insure that objects reflect properly when adding documents to a book, or updating page numbers, make sure the documents are open. If they are not open, the objects will not reflect. If for whatever reason reflective objects did not reflect when they should have, it is still possible to force them to reflect manually. Simply select: API → Reflective Objects → Trigger Object Reflection. This will only effect objects which changed page sides, but were not reflected. It will *not* effect objects which remain in their proper position. It is therefore safe to repeatedly select this menu option.

Transferring Documents

All reflective settings are stored within the document. These settings are saved even if the document is transferred to a computer which doesn't have *Reflective Objects* installed. The stored information includes each object's position and page side. Documents can therefore be successfully transferred without issues.

One issue which can come up is as follows: Lets assume the document is transferred to a computer which doesn't have *Reflective Objects* installed, and reflective objects are moved. When the document is transferred back to a computer with *Reflective Objects* installed, objects will have their original position stored. This can cause the object to move to unexpected places.

To solve this issue, reflective objects should be "Deactivated". All this does is erase the stored positions of all the objects in the document. To start recording position information again, simply select "Activate Reflective Objects". Deactivating reflective objects does not change the reflective settings. They

Reflective Objects

Reflective Objects

remain reflective. It simply removes the information of where they are positioned.

Another reason you might want to deactivate objects would be for copying between documents. If you copy a reflective object to an opposing page *even in another document*, *Reflective Objects* will attempt to move it to its reflective position. This might cause you to have to fight against *Reflective Objects* for correct positioning in the new document. One way to avoid this, is to deactivate all reflective objects in the source document before copying the objects. Another way would be to deactivate the objects in the target document.

Please note: The deactivated state of reflective objects is a document-wide setting. All objects in a deactivated document will remain deactivated until the document is activated once more. Objects copied between documents will take on the activated state of the target document. For example: an object copied from a deactivated document to an activated one will become activated. However, the position of the object will be the *new* position, not the old position in the deactivated document. An object copied to a deactivated document will become deactivated, and no positioning data will be recorded. Copying objects between two activated documents will have the same effect as copying objects to another page in the same document.

CS3ME users please note: Winsoft changed behavior in right-to-left documents in CS3 version 5.0.1. Previously, the zero point of the document was at the top left in all documents regardless of document direction. In version 5.0.1, the zero point was moved to the top right on right-to-left documents. This causes all measurements on the page to be negative numbers. When changing document direction, all the reflective positions become invalid. If you are using *Reflective Objects* in CS3ME version 5.0.1 you *must* reactivate

Reflective Objects

Reflective Objects

objects after changing document direction. **Failure to do so may cause objects to disappear!** This issue has been fixed in the 5.0.2 update. We strongly advise updating to 5.0.2.

Scripting

Applying Settings

The main functions of *Reflective Objects* can be accessed through scripting. To apply reflective settings to objects, simply append one of four strings to an object's label: "<ReflectiveObject1>", "<ReflectiveObject2>", "<ReflectiveObject3>", "<ReflectiveObject4>". These labels correspond to the four reflective options in order. So an object with a script label which contains <ReflectiveObject1> will be set to reflect position, and so on. Simply applying the script labels will just assign the objects as being reflective. They will not cause any position data to be recorded. To insure that the data is recorded, and the objects will be automatically reflected, make sure to modify them in some way after the label is changed *or* manually activate the reflective properties of the reflective objects. (see below).

Using Event Handler Codes

Besides applying the settings to the objects, the plug-in can be communicated with directly. This is accomplished by sending *event handlers* to the plug-in.

To send an event handler to *Reflective Objects* you must first get a reference to the plug-in. The plug-in is accessed using the document loaded plugins method. The correct syntax in Javascript would be: `doc.loadedScriptedPlugins ("reflectiveobjects")`. In AppleScript that

Reflective Objects

would be (within a document “tell”): loaded scripted plugins label “reflectiveobjects”. No matter which scripting language is being used, the plug-in is returned as a single-item array. So if you get a reference to the first item of that array you then have a valid reference to *Reflective Objects*. To further illustrate this point, this line of code (assuming a valid reference to a document) will return a reference to *Reflective Objects* in javascript:

```
var reflectivObjectsPlugin=doc.loadedScriptedPlugins("reflectiveobjects")[0]
```

Once you have a reference to the plug-in, you can then send event handlers to the plug-in . There are three different event handlers which can be used: `externalReflectObjects`, `externalDeactivateReflection`, and `externalActivateReflection`. These three event handler codes correspond to the three last menu options under *Reflective Objects* namely: “Deactivate Reflective Objects”, “Activate Reflective Objects”, and “Trigger Object Reflection”. To send the event handler codes to the plug-in you should do something like this:

```
reflectivObjectsPlugin.handleScriptEvent ("externalReflectObjects")
```

The event code “`externalReflectObjects`” is used to simulate the effect of modifying all reflective objects in the document. This is useful to force the immediate reflection of objects within a script. The reflection normally happens at idle time, and if a script closes the document or makes modifications too quickly, the reflection may not happen automatically. Another situation where you would want to invoke this event handler, would be when book documents have been updated while they were closed. As explained in section on books, changing book files while the documents are closed will cause them to not be reflected automatically. Invoking `externalReflectObjects` will fix this issue.

Reflective Objects

Reflective Objects

If your script will be moving around objects, and you do not want to fight *Reflective Objects* for position of the objects make sure to invoke “externalDeactivateReflection” before moving things around.

The event code “externalActivateReflection” commonly has two uses. First of all it should be used the same way Activate Reflective Objects is used in the user interface: to activate reflection after it has been disabled. The second use in scripting is to cause the position data to be written when objects are assigned reflective properties by changing their script label.

For further illustration on scripting Reflective Objects [download the sample scripts from In-Tools’ website](#).

Addendum

What is “APID ToolAssistant”?

Classically, there are only two ways to automate InDesign. One way is by scripting. Scripts are a series of commands written in one of the three supported scripting languages — AppleScript for the Macintosh, Visual Basic for Windows, or ExtendScript for both platforms. ExtendScript is Adobe’s version of javascript. For scripts to run, they must be placed in the application script folder and explicitly run. For automation to be truly automatic, it requires “event processing”. This means that certain events trigger specific processes to take place. There is limited event-triggered scripting available in CS3.

To achieve true integration, plug-ins must be programmed using c++. Developing c++ plug-ins is a very involved, and lengthy process. APID Tool-

Reflective Objects

Assistant is a plug-in which allows very fine grained event processing using ExtendScript. It allows for creation of advanced plug-ins in a fraction of the time required when programming using C++. It also aids in the creation of hybrid plug-ins which mix ExtendScript and C++ for maximum efficiency.

Without the APID ToolAssistant, it would not have been possible to create the collection of plug-ins we offer in the same amount of development time. This increased programming efficiency means more functionality for the end user and lower prices.

Additionally, APID ToolAssistant offers the ability to attach scripts to specific objects. These attached scripts can be run automatically when triggered by specific events. Anyone who has a licensed version of the APID ToolAssistant plug-in installed can create and use these attached scripts. There are also additional scripting properties and methods which are usable by scripts. For more information see Rorohiko's web site.

Reflective Objects

Acknowledgements

We wish to thank the many people who have helped make In-Tools plug-ins possible.

To those who give graciously of their time and expertise on the InDesign scripting forum: thank you for introducing us to automating within InDesign. Most specifically, Dave Saunders, Olav Kvern, and Peter Kahrel.

To Kris Coppieters, thank you for your incredible support throughout the entire development process. Your help with product improvements and with coding tips and techniques has been incredible. Your support has been above and beyond what we could have reasonably expected. It has really been a pleasure working together. Thank you.

To all our beta testers, thank you for the valuable input which helped shaped our plug-ins. To Brad Walrod: a special thank you for your unrelenting comments and suggestions. To Peter Gold and Raphael Freeman: thank you for your many useful suggestions.

Reflective Objects

License Agreement

Please read the following document carefully!

This is a legal agreement (the Agreement) between you and Print Israel LLC (In-Tools), the developer of the In-Tools software. This Agreement pertains to your use of the In-Tools software and documentation which are provided to you by In-Tools (collectively, the Software). By copying, installing, or otherwise using the Software, you accept all the terms and provisions of the Agreement.

Terms of Use

The provisions of the [In-Tools Privacy Policy](#) are incorporated herein and made a part hereof.

License

This Agreement grants you a personal, non-exclusive, non-transferable, non-sublicensable right to use one copy of the Software for use on a single computer and/or workstation for each license that you purchase. You may try the Software before purchasing a license, for the specified amount of time in the materials accompanying the Software. YOU UNDERSTAND AND AGREE THAT BY USING THE TRIAL SOFTWARE, AFTER THE AMOUNT OF TIME YOU MAY NOT BE ABLE TO CONTINUE TO USE THE SOFTWARE UNLESS YOU PURCHASE A LICENSE.

In-Tools reserves all rights in the Software not expressly granted herein, including without limitation ownership and proprietary rights.

License Restrictions

You may not reverse engineer, decompile or disassemble the Software. The restrictions contained herein apply equally to any updates that may be provided to you by In-Tools.

Reflective Objects

Intellectual Property Rights and Third Party Materials

All service marks, logos, trade names, trade dress, and trademarks of In-Tools (collectively Marks) are the exclusive property of In-Tools and nothing in this Agreement shall grant you the license to use such Marks. All intellectual property rights in the Software are owned exclusively by In-Tools and are protected by United States of America copyright laws and international copyright treaty provisions. Any violation of the terms set forth herein is expressly prohibited by law and may result in severe civil and criminal penalties.

Disclaimer of Warranties

ALL SOFTWARE PROVIDED BY IN-TOOLS ARE PROVIDED AS IS. IN-TOOLS AND ITS AGENTS, PARTNERS, OR EMPLOYEES MAKE NO REPRESENTATION OR WARRANTY TO YOU OR ANY OTHER PERSON OR ENTITY, WHETHER EXPRESS, IMPLIED, OR STATUTORY, AS TO THE DESCRIPTION, QUALITY, TITLE, NON-INFRINGEMENT, MERCHANTABILITY, COMPLETENESS, OR FITNESS FOR A PARTICULAR USE OR PURPOSE AS TO THE SOFTWARE PROVIDED TO YOU, OR AS TO ANY OTHER MATTER, ALL SUCH WARRANTIES HEREBY BEING EXPRESSLY EXCLUDED AND DISCLAIMED.

NEITHER IN-TOOLS NOR ANY OF ITS AGENTS, PARTNERS, OR EMPLOYEES WARRANTS THAT THE SOFTWARE OR SERVICES ARE ERROR FREE OR WILL OPERATE WITHOUT CAUSING LOSS OR INTERRUPTION YOUR COMPUTER USAGE OR DATA. YOU ASSUME TOTAL RESPONSIBILITY AND RISK FOR YOUR USE OF THE SOFTWARE.

Limitation of Liability

IN NO EVENT SHALL IN-TOOLS, ITS AFFILIATES, SUBSIDIARIES, PARENT COMPANIES, AGENTS, NETWORK SERVICE PROVIDERS, PARTNERS, OR EMPLOYEES BE LIABLE TO YOU OR ANY THIRD PARTY IN ANY RESPECT FOR ANY COSTS OR DAMAGES ARISING EITHER DIRECTLY OR

Reflective Objects

INDIRECTLY FROM THE USE OF IN-TOOLS SOFTWARE INCLUDING WITHOUT LIMITATION ANY ACTUAL, INCIDENTAL, CONSEQUENTIAL, EXEMPLARY, PUNITIVE, RELIANCE OR SPECIAL DAMAGES, OR FOR ANY LOSS OF REVENUE, PROFITS, USE, DATA, GOODWILL OR BUSINESS OPPORTUNITIES OF ANY KIND OR NATURE WHATSOEVER, ARISING IN ANY MANNER FROM ANY CAUSE OF ACTION OR CLAIM RELATING TO THIS AGREEMENT, TO THE SERVICES PROVIDED BY IN-TOOLS OR TO THE USE OF THE SOFTWARE. THIS LIMITATION OF LIABILITY APPLIES EQUALLY TO ANY THIRD PARTIES WITH WHOM IN-TOOLS ENTERS INTO A BINDING AGREEMENT TO MARKET, DISPLAY AND/OR DISTRIBUTE THE SOFTWARE TO END USERS AND SUCH THIRD PARTIES SHALL NOT BE LIABLE TO YOU OR ANY OTHER THIRD PARTY FOR ANY OF THE DAMAGES SET FORTH ABOVE.

Export Control Laws.

You agree to comply with all laws, rules and regulations applicable to the export of the Software. Specifically, you shall not export, re-export or transship the Software, or the direct product thereof, in violation of any United States laws and regulations which may from time to time be applicable. None of the Software or underlying information or technology may be downloaded or otherwise exported or re-exported (i) into, or to a national or resident of, Cuba, Iran, Iraq, Libya, North Korea, Sudan, Syria or any other country to which the U.S. has embargoed goods; or (ii) to anyone on the U.S. Treasury Department's list of Specially Designated Nationals or the U.S. Commerce Department's Table of Denial Order. By downloading or using the Software, you are agreeing to the foregoing and you are representing and warranting that you are not located in, under the control of, or a national or resident of any such country or on any such list.

Jurisdiction and Other Provisions

This Agreement and the relationship between In-Tools and you shall be governed in accordance with the laws of the State of New York. Any dispute between you and In-

Reflective Objects

Reflective Objects

Tools regarding this Agreement will be subject to the exclusive jurisdiction of the state and federal courts in the State of New York. You agree to submit to exclusive jurisdiction in the State of New York, and you expressly waive all defenses to jurisdiction.

This Agreement is the entire agreement between you and In-Tools relating to your use of the Software and supersedes any other communications or advertising with respect to the Software. If any provision of this Agreement is held invalid, the remainder of this Agreement will continue in full force and effect. In-Tools failure to insist upon or enforce strict performance of any provision of this Agreement shall not be construed as a waiver of any provision or right. Neither the course of conduct between the parties nor trade practice shall act to modify any provision of this Agreement. In-Tools may assign its rights and duties under this Agreement to any party at any time without notice to you.

Modifications of Agreement

In-Tools may modify this Agreement at any time without providing notice to you. Such modification will be made by posting a revised agreement on its web site and such modification shall be deemed effective immediately upon posting of the modified Agreement. Your continued access or use of the Software or Services shall be deemed your acceptance of the modified Agreement. You agree to check our web site periodically to review such modifications.

Termination or Modifications of Software

You may terminate this Agreement at any time. The In-Tools may immediately terminate the Agreement if you breach any representation, warranty, agreement or obligation contained or referred to in the Agreement. Upon termination, you must dispose of the Software and all copies or versions of the Software by destroying the Software. In-Tools reserves the right to modify the Software at any time without providing notice to you. In-Tools right to modify the Software applies to all or any aspect of the Software.

Reflective Objects

Reflective Objects

YOU ACKNOWLEDGE THAT YOU HAVE READ THIS AGREEMENT AND UNDERSTAND IT AND THAT, BY USING THE SOFTWARE, WEB SITE, YOU AGREE TO BE BOUND BY ITS TERMS AND CONDITIONS.