

Auto-Flow

**CS2/CS3
InDesign Plug-in**

version 1.0

last revision: May 18, 2008

Auto — Flow

Contents

3 Introduction

4 Installation

Enabling and Disabling Plug-ins.

6 Purchasing Licenses and Activation

8 Usage

10 Applying Settings

Defaults and Object Styles

Scripting

13 Known issues and planned improvements

Performance

Current Limitations

14 Addendum

What is “APID ToolAssistant”?

16 Acknowledgements

17 License Agreement

Auto — Flow

Introduction

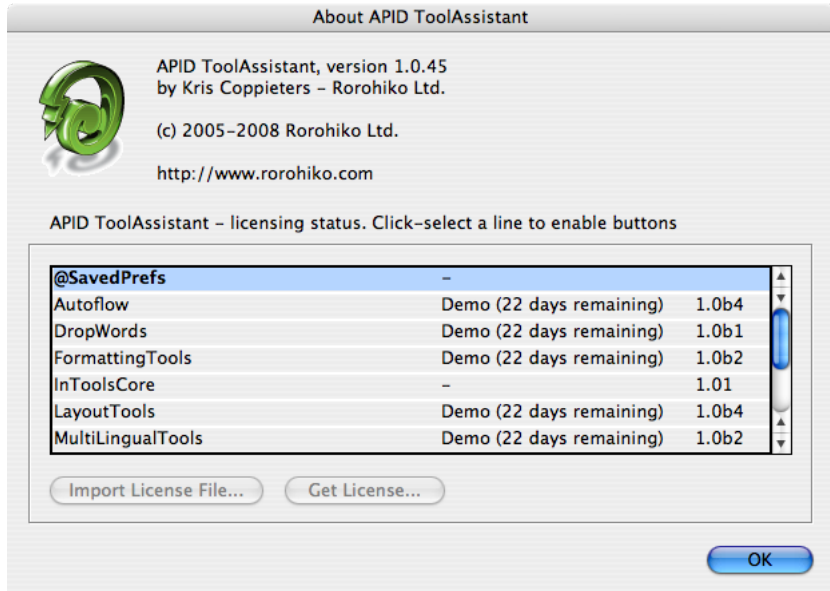
Auto-Flow was created to remedy two shortcomings of InDesign:

1. Text edited in InDesign does not flow dynamically. To correct the resultant overset text, text frames must constantly be added and re-sized.
2. When laying out multiple columns in InDesign, text frames are flowed to fill the first column before filling the second column. The only way to balance columns is to shrink the frames to fit the text.

Auto-Flow allows text frames to dynamically expand and shrink. The automatic re-sizing can even be set for threaded stories. *Auto-Flow* does not require the use of master text frames—an important advantage over other products which offer auto-flow capabilities.

Auto — Flow

Installation



Auto-Flow is different than most plug-ins. It was developed using a product called “APID ToolAssistant” created by Rorohiko. There is a central controller provided by Rorohiko which does a lot of the low-level processing. *If you are interested in the technology behind the development, you can read the addendum in the back of the manual.*

There are four different files which must be installed for *Auto-Flow* to function properly: 1. APIDToolAssistantCSx.xxx (the exact name depends on your version) 2. @SavedPrefs.spln 3. InToolsCore.spln (version 1.01) 4. Autoflow.spln.

All of these files need to be copied to InDesign’s plug-ins folder. They may be copied to a sub-folder, but they must all be in the same one!

Auto — Flow

Please note: APID ToolAssistant replaces an older version of the plug-in. In the past, there were two versions of the API plug-in distributed by Rorohiko. Active Page Items Developer (APID), was the version developed to work with externally developed plug-ins. The free Active Page Items Runtime (APIR), was for plug-ins developed internally at Rorohiko. If you have either of these two plug-ins installed, you must remove them and install the APID ToolAssistant instead. The older APIR or APID plug-ins will not work. You must have the most current version of the APID ToolAssistant installed (version 1.0.45).

Shown above is the “About” window of API. This window can be brought up in two ways: 1. Select InDesign ➤ About Plug-Ins ➤ Rorohiko Ltd. ➤ APID ToolAssistant... 2. API ➤ APID ToolAssistant...

In-Tools plug-ins do not show up separately in the “About Plug-Ins” menu. Information on installed In-Tools plug-ins are only displayed in the “About” window of API. If the plug-ins are properly installed you should see the displayed window (or the equivalent Windows version).

Please note the API version number near the top of the window. Your version number must say 1.0.45 or higher. Additionally it must say “APID ToolAssistant”. If it says “Active Page Item Developer” or “Active Page Item Runtime”, you have the wrong version installed. As mentioned above, both of these versions have been replaced with APID ToolAssistant.

When in doubt: search your plug-in folder for a file whose name contains “ActivePageItem”, and replace it with the new one.

In the “About” window, there is a list of all installed plug-ins and their status. The first column lists the plug-ins. The second column shows the license status. If the plug-in is licensed, “Licensed For APID” will be displayed. If the

Auto — Flow

plug-in is in demo mode, the word “Demo” will be displayed along with the number of days remaining until the plug-in expires. The third column shows the plug-in’s version number. When trying to determine that you have the most current version of a plug-in, please refer to the version number listed in this column.

Enabling and Disabling Plug-ins.

To enable or disable any individual plug-in, simply move the file into or out of the folder which contains the APID ToolAssistant plug-in. One simple solution would be to create two folders within your plug-in folder. Name one “API”, and the other “API disabled”. You can then easily move files back and forth.

The APID ToolAssistant is like any other plug-in, and InDesign must be restarted when it is installed or removed. However, the rest of the plug-ins do not require a restart of InDesign when they are installed or removed. Newly installed plug-ins are available in documents when they are opened. If there are open documents when you install any of the *.spln files, those documents should be closed and reopened.

Please note: In-Tools plug-ins are unique, in that menu items will not appear until a document is opened. The plug-ins will appear in the plug-in list in the “About” window, but menu items only appear after a document is opened or created.

Purchasing Licenses and Activation

There are two ways to purchase In-Tools plug-ins: They can be purchased from the In-Tools web site prior to activation, or they can be purchased directly from within InDesign. If the plug-ins are purchased from the web site,

Auto — Flow

you will establish a login and password for activation at the time of purchase. If you purchase the plug-ins from within InDesign, the payment and activation both occur simultaneously. If you plan to purchase a plug-in package, or would like to purchase a number of plug-ins in one transaction, you should purchase them from the In-Tools web site before you initiate the activation process.

No matter how you purchase the plug-ins, the process from within InDesign is the same:

1. Select the plug-in you would like to activate.
2. Click “Get License”. This will take you to the log-in page of the In-Tools web site.

The screenshot shows a web interface with two main sections. The top section, titled "Customer Login", has a light blue background and contains the text "Please login using your email address and password to continue." Below this are two input fields labeled "Email Address:" and "Password:", followed by a "Login" button. The bottom section, titled "If you do not yet have an In-Tools account, create one below.", also has a light blue background and contains the text "Please enter your email address and choose a password. You will use this password to login to your account in order to install a license from within InDesign." Below this are four input fields labeled "Name/Company:", "Email Address:", "Choose a Password:", and "Confirm Password:", followed by a "Submit" button.

Customer Login

Please login using your email address and password to continue.

Email Address:

Password:

Login

If you do not yet have an In-Tools account, create one below.

Please enter your email address and choose a password. You will use this password to login to your account in order to install a license from within InDesign.

Name/Company:

Email Address:

Choose a Password:

Confirm Password:

Submit

If you already have an In-Tools account, fill in your login and password. Otherwise create an account now. If you already paid for your plug-ins, make sure you fill in the login information you provided at the time of purchase. You *must* provide a valid e-mail address or you might not receive your license file.

Auto — Flow

3. If you have not yet paid for the plug-in you will be taken to a PayPal payment page. On successful completion of the payment, you will be returned to the log-in page.
4. After successfully completing the log-in procedure, you will either get a link to download a license file, or you will receive one by e-mail (depending on various factors). Please allow one to two business days to receive an e-mail with the license file. The license file is specific to the installation from within which you have activated the license. It will not work on a different installation, even with the same serial number. If you need to use In-Tools plug-ins with more than one installation of InDesign, you will need to purchase an additional license for each installation.
5. Once you have your license file, go back to the “About” window in InDesign, select the plug-in you are activating and click on “Import License File”. Locate the file on your hard drive and click “Open”. The status next to your plug-in will change to “Licensed”.

Please note: After the trial period of In-Tools plug-ins expire, they will only work if *both* the In-Tools plug-in *and* the APID ToolAssistant is licensed. Only one license of the APID ToolAssistant is required per installation of InDesign. If you are not sure whether your installation of the APID ToolAssistant is licensed, make sure you purchase the plug-in using the “Get License” button. The In-Tools activation software will automatically determine if you require the license for APID, and create a double license if necessary.

Usage

Auto-Flow has three basic settings: 1. Add Pages 2. Expand Frames and Pages 3. Full Text Fitting

Auto — Flow

“Add Pages” does just that. It adds as many pages as needed to fit your text when the last frame in your story is overset.

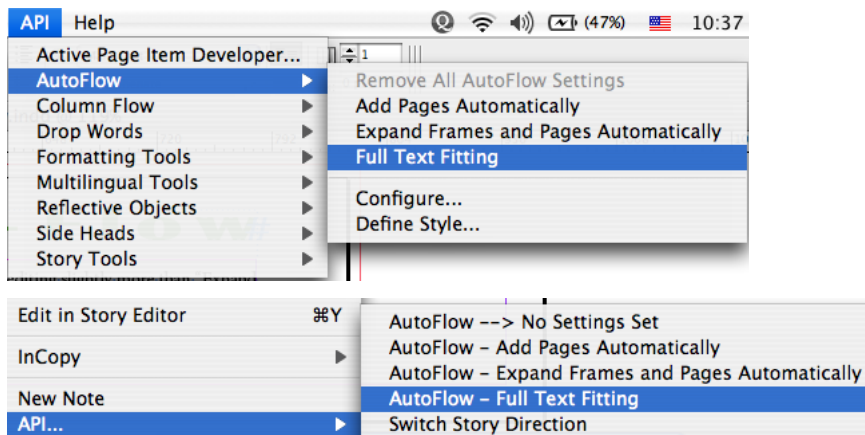
“Expand Frames and Pages” expands the last frame in your story to the bottom margin as you add text. It will only add as much space as needed to fit your text. If the frame is overset after it is expanded to the bottom margin, *Auto-Flow* will add pages as needed. It will not shrink frames — only expand them. It is advisable to use this setting rather than “Full Text Fitting” when you only need to expand (and not shrink) frames. “Full Text Fitting” has much more overhead and will slow editing slightly more than “Expand Frames”.

Full Text Fitting offers the same functionality as “Expand Frames and Pages”, *plus* it shrinks frames and removes empty pages when text is deleted. There is a slight delay (about a second) between editing and shrinking to prevent constant processing while editing text.

Regardless of which settings you choose, *Auto-Flow* will only adjust the last frame(s) in your story. It will not adjust frames in the middle of your story flow (for example, even if it might be able to be shrunk to balance columns, or expanded to fit more text).

Auto — Flow

Applying Settings



Auto-Flow does nothing unless you set it to work on your story. The settings are set to text frames, on a story basis. You cannot set different settings on different frames in one story, but you can have different settings on different stories. Above are screenshots of the AutoFlow menus.

Settings are applied via a contextual menu. Right click (or control click) on a text frame, or in the text, to bring up the contextual menu. Under API are four auto-flow options : “No Setting” , “Add Pages” , “Expand Frames and Pages” and “Full Text Fitting”. There is an indication next to the current setting.

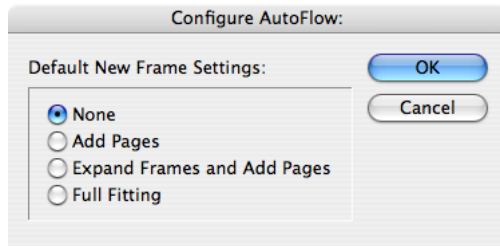
Alternatively, you can access the settings via menu items. Select API → AutoFlow → <Preferred Setting>. If you apply the settings on a regular basis, you can assign a keyboard shortcut.

Defaults and Object Styles

The menu contains two options: API → AutoFlow → Configure... and API → AutoFlow → Define Style...

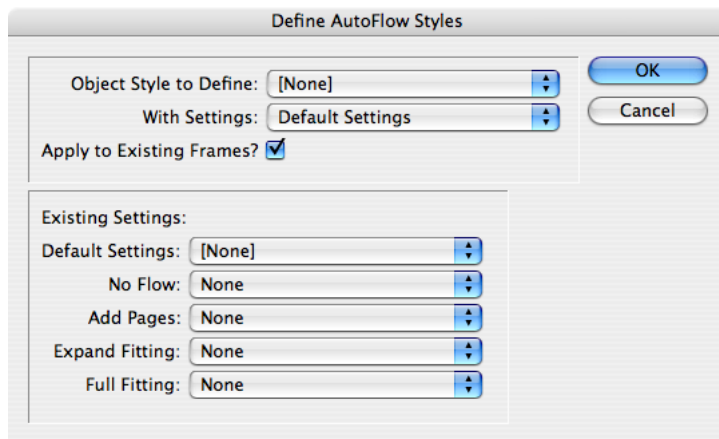
Auto — Flow

“Configure...” sets the default settings for new frames which have an object style not defined by “Define Style”.



Please note: These settings will only apply to new text frames. Existing frames will not be affected.

“Define Style...” defines auto-flow settings for object styles. You can set defaults for new frames created with the selected style as well as apply the settings to all text frames with the selected style applied.



In the above dialog you will see two distinct sections. The top half is where you define the settings, while the bottom half is strictly informational. (Changing the selections in the drop-down lists does nothing.)

Auto — Flow

To define auto-flow settings for an object style:

1. Select your style from the top drop-down list “Object Style to Define”.
2. Select the appropriate setting from the second drop down list “With Settings”.

Please note: There is a distinct difference between “Default Settings”, and “No Flow”. If “Default Settings” is selected, new objects created with the selected style will have the settings defined as your defaults. If “No Flow” is selected, new objects will not auto-flow regardless of your defaults. Additionally, applying an object style which is set to “No Flow” will remove any *Auto-Flow* settings, while ones set to “Default Settings” will retain their prior settings.

3. To apply the settings to existing objects of the selected style, check “Apply to Existing Objects”. If you just want to create settings for new objects, uncheck the option.

Setting a text frame to auto-flow will affect the whole story—even frames with a different style. The last style applied to any frame in the story is the defining one. Take care in which order you apply styles which have Auto-Flow settings.

Default settings and styles are saved within the document, and will be preserved when transferring the document to a different computer. If the file is exported to the InDesign Exchange format (inx), all defaults including the defaults for styles will be lost, but existing settings on frames will be preserved.

Scripting

Auto-Flow settings can be applied and removed via scripting. You simply give the frames a label <AutoFlow1> , or <AutoFlow2>, or <AutoFlow3>

Auto — Flow

depending on the desired setting. AutoFlow1 corresponds to “Add Pages”, AutoFlow2 corresponds to “Expand Frames”, and AutoFlow3 corresponds to “Full Fitting”. Make sure you only give one of the mentioned labels! Removing the script label will remove any settings. Make sure you adjust the label for all the frames in the story.

If there is already a script label applied to any of the frames, it will have the *Auto-Flow* label added to the existing string. If you must use script labels on the frames, you should use the `match()` method (in js) to find your label within the whole label string. When applying your label, make sure to add it to the existing string, instead of simply replacing the existing label. Using private labels (used with the insert label and extract label methods) is preferable.

Known issues and planned improvements

Performance

The performance should be very fast in CS3. CS2 is noticeably more sluggish when resizing frames.

Current Limitations

When linking together existing frames, it is possible to get frames within the same story with different settings. Take care when threading frames.

Added pages and frames do not currently take into account column settings or frame position. New frames are added to fit the outside margins. This might be addressed in a future version.

Master page frames are treated as regular frames. We hope to add special handling for master page frames in a future version as well.

Auto — Flow

Addendum

What is “APID ToolAssistant”?

Classically, there are only two ways to automate InDesign. One way is by scripting. Scripts are a series of commands written in one of the three supported scripting languages — AppleScript for the Macintosh, Visual Basic for Windows, or ExtendScript for both platforms. ExtendScript is Adobe’s version of javascript. For scripts to run, they must be placed in the application script folder and explicitly run. For automation to be truly automatic, it requires “event processing”. This means that certain events trigger specific processes to take place. There is limited event-triggered scripting available in CS3.

To achieve true integration, plug-ins must be programmed using C++. Developing C++ plug-ins is a very involved, and lengthy process. APID ToolAssistant is a plug-in which allows very fine grained event processing using ExtendScript. It allows for creation of advanced plug-ins in a fraction of the time required when programming using C++. It also aids in the creation of hybrid plug-ins which mix ExtendScript and C++ for maximum efficiency.

Without the APID ToolAssistant, it would not have been possible to create the collection of plug-ins we offer in the same amount of development time. This increased programming efficiency means more functionality for the end user and lower prices.

Additionally, APID ToolAssistant offers the ability to attach scripts to specific objects. These attached scripts can be run automatically when triggered by specific events. Anyone who has a licensed version of the APID ToolAssistant plug-in installed can create and use these attached scripts. There

Auto — Flow

are also additional scripting properties and methods which are usable by scripters. For more information see Rorohiko's web site.

Auto — Flow

Acknowledgements

We wish to thank the many people who have helped make In-Tools plug-ins possible.

To those who give graciously of their time and expertise on the InDesign scripting forum: thank you for introducing us to automating within InDesign. Most specifically, Dave Saunders, Olav Kvern, and Peter Kahrel.

To Kris Coppieters, thank you for your incredible support throughout the entire development process. Your help with product improvements and with coding tips and techniques has been incredible. Your support has been above and beyond what we could have reasonably expected. It has really been a pleasure working together. Thank you.

To all our beta testers, thank you for the valuable input which helped shaped our plug-ins. To Brad Walrod: a special thank you for your unrelenting comments and suggestions. To Peter Gold and Raphael Freeman: thank you for your many useful suggestions.

Auto — Flow

License Agreement

Please read the following document carefully!

This is a legal agreement (the Agreement) between you and Print Israel LLC (In-Tools), the developer of the In-Tools software. This Agreement pertains to your use of the In-Tools software and documentation which are provided to you by In-Tools (collectively, the Software). By copying, installing, or otherwise using the Software, you accept all the terms and provisions of the Agreement.

Terms of Use

The provisions of the [In-Tools Privacy Policy](#) are incorporated herein and made a part hereof.

License

This Agreement grants you a personal, non-exclusive, non-transferable, non-sublicensable right to use one copy of the Software for use on a single computer and/or workstation for each license that you purchase. You may try the Software before purchasing a license, for the specified amount of time in the materials accompanying the Software. YOU UNDERSTAND AND AGREE THAT BY USING THE TRIAL SOFTWARE, AFTER THE AMOUNT OF TIME YOU MAY NOT BE ABLE TO CONTINUE TO USE THE SOFTWARE UNLESS YOU PURCHASE A LICENSE.

In-Tools reserves all rights in the Software not expressly granted herein, including without limitation ownership and proprietary rights.

License Restrictions

You may not reverse engineer, decompile or disassemble the Software. The restrictions contained herein apply equally to any updates that may be provided to you by In-Tools.

Intellectual Property Rights and Third Party Materials

All service marks, logos, trade names, trade dress, and trademarks of In-Tools (collectively Marks) are the exclusive property of In-Tools and nothing in this Agreement

Auto — Flow

shall grant you the license to use such Marks. All intellectual property rights in the Software are owned exclusively by In-Tools and are protected by United States of America copyright laws and international copyright treaty provisions. Any violation of the terms set forth herein is expressly prohibited by law and may result in severe civil and criminal penalties.

Disclaimer of Warranties

ALL SOFTWARE PROVIDED BY IN-TOOLS ARE PROVIDED AS IS. IN-TOOLS AND ITS AGENTS, PARTNERS, OR EMPLOYEES MAKE NO REPRESENTATION OR WARRANTY TO YOU OR ANY OTHER PERSON OR ENTITY, WHETHER EXPRESS, IMPLIED, OR STATUTORY, AS TO THE DESCRIPTION, QUALITY, TITLE, NON-INFRINGEMENT, MERCHANTABILITY, COMPLETENESS, OR FITNESS FOR A PARTICULAR USE OR PURPOSE AS TO THE SOFTWARE PROVIDED TO YOU, OR AS TO ANY OTHER MATTER, ALL SUCH WARRANTIES HEREBY BEING EXPRESSLY EXCLUDED AND DISCLAIMED.

NEITHER IN-TOOLS NOR ANY OF ITS AGENTS, PARTNERS, OR EMPLOYEES WARRANTS THAT THE SOFTWARE OR SERVICES ARE ERROR FREE OR WILL OPERATE WITHOUT CAUSING LOSS OR INTERRUPTION YOUR COMPUTER USAGE OR DATA. YOU ASSUME TOTAL RESPONSIBILITY AND RISK FOR YOUR USE OF THE SOFTWARE.

Limitation of Liability

IN NO EVENT SHALL IN-TOOLS, ITS AFFILIATES, SUBSIDIARIES, PARENT COMPANIES, AGENTS, NETWORK SERVICE PROVIDERS, PARTNERS, OR EMPLOYEES BE LIABLE TO YOU OR ANY THIRD PARTY IN ANY RESPECT FOR ANY COSTS OR DAMAGES ARISING EITHER DIRECTLY OR INDIRECTLY FROM THE USE OF IN-TOOLS SOFTWARE INCLUDING WITHOUT LIMITATION ANY ACTUAL, INCIDENTAL, CONSEQUENTIAL, EXEMPLARY, PUNITIVE, RELIANCE OR SPECIAL DAMAGES, OR FOR ANY LOSS OF REVENUE, PROFITS, USE, DATA, GOODWILL OR BUSINESS OP-

Auto — Flow

PORTUNITIES OF ANY KIND OR NATURE WHATSOEVER, ARISING IN ANY MANNER FROM ANY CAUSE OF ACTION OR CLAIM RELATING TO THIS AGREEMENT, TO THE SERVICES PROVIDED BY IN-TOOLS OR TO THE USE OF THE SOFTWARE. THIS LIMITATION OF LIABILITY APPLIES EQUALLY TO ANY THIRD PARTIES WITH WHOM IN-TOOLS ENTERS INTO A BINDING AGREEMENT TO MARKET, DISPLAY AND/OR DISTRIBUTE THE SOFTWARE TO END USERS AND SUCH THIRD PARTIES SHALL NOT BE LIABLE TO YOU OR ANY OTHER THIRD PARTY FOR ANY OF THE DAMAGES SET FORTH ABOVE.

Export Control Laws.

You agree to comply with all laws, rules and regulations applicable to the export of the Software. Specifically, you shall not export, re-export or transship the Software, or the direct product thereof, in violation of any United States laws and regulations which may from time to time be applicable. None of the Software or underlying information or technology may be downloaded or otherwise exported or re-exported (i) into, or to a national or resident of, Cuba, Iran, Iraq, Libya, North Korea, Sudan, Syria or any other country to which the U.S. has embargoed goods; or (ii) to anyone on the U.S. Treasury Department's list of Specially Designated Nationals or the U.S. Commerce Department's Table of Denial Order. By downloading or using the Software, you are agreeing to the foregoing and you are representing and warranting that you are not located in, under the control of, or a national or resident of any such country or on any such list.

Jurisdiction and Other Provisions

This Agreement and the relationship between In-Tools and you shall be governed in accordance with the laws of the State of New York. Any dispute between you and In-Tools regarding this Agreement will be subject to the exclusive jurisdiction of the state and federal courts in the State of New York. You agree to submit to exclusive jurisdiction in the State of New York, and you expressly waive all defenses to jurisdiction.

Auto — Flow

This Agreement is the entire agreement between you and In-Tools relating to your use of the Software and supersedes any other communications or advertising with respect to the Software. If any provision of this Agreement is held invalid, the remainder of this Agreement will continue in full force and effect. In-Tools failure to insist upon or enforce strict performance of any provision of this Agreement shall not be construed as a waiver of any provision or right. Neither the course of conduct between the parties nor trade practice shall act to modify any provision of this Agreement. In-Tools may assign its rights and duties under this Agreement to any party at any time without notice to you.

Modifications of Agreement

In-Tools may modify this Agreement at any time without providing notice to you. Such modification will be made by posting a revised agreement on its web site and such modification shall be deemed effective immediately upon posting of the modified Agreement. Your continued access or use of the Software or Services shall be deemed your acceptance of the modified Agreement. You agree to check our web site periodically to review such modifications.

Termination or Modifications of Software

You may terminate this Agreement at any time. The In-Tools may immediately terminate the Agreement if you breach any representation, warranty, agreement or obligation contained or referred to in the Agreement. Upon termination, you must dispose of the Software and all copies or versions of the Software by destroying the Software. In-Tools reserves the right to modify the Software at any time without providing notice to you. In-Tools right to modify the Software applies to all or any aspect of the Software.

YOU ACKNOWLEDGE THAT YOU HAVE READ THIS AGREEMENT AND UNDERSTAND IT AND THAT, BY USING THE SOFTWARE, WEB SITE, YOU AGREE TO BE BOUND BY ITS TERMS AND CONDITIONS.