

Side Heads

**CS2/CS3
InDesign Plug-in**

version 1.0.2

last revision: July 28, 2008

Side Heads

Contents

3 Introduction

7 Installation

Enabling and Disabling Plug-ins.

10 Purchasing Licenses and Activation

12 Setup

Applying Settings

Paragraph Type

Character Type

Footnote Type

18 Creating Side Heads:

Update All Side Heads

Undo Side Heads

19 Addendum

What is “APID ToolAssistant”?

21 Acknowledgements

22 License Agreement

Side Heads

Introduction

Side Heads was created in response to numerous requests for a plug-in that would enable the user to easily create side heads in InDesign. In this document, the term “side heads” refers to any text which is attached to the main text, but is defined with its own position. The position of the side heads may or may not be within the bounds of the text frame of the main story.

This plug-in uses anchored frames, which is a standard feature of InDesign CS2 and higher. In certain circumstances, *Side Heads* also makes use of the notes plug-in which is installed in CS3 by default, and is available for optional installation on the CS2 installation disk. We recommend installing the CS2 notes plug-in if you will be using character-based side heads and want to be able to undo them.

Side Heads not only creates the side heads for the text, it will also apply formatting based on the object style settings which you set up. The frames which *Side Heads* creates can be in-line, above-line, or anchored, depending on your settings.

While the use of anchored frames removes the text from the text flow, the text can easily be returned to the text flow for exporting of the text.

If you use a bit of creativity, *Side Heads* opens up some very interesting layout possibilities. Below are some examples of how *Side Heads* has been used. Thank you to Brad Walrod and Raphael Freeman for the illustrations.

Side Heads

Mercer National Survey of Employer-Sponsored Health Plans 2007

Specialty Medical Benefits

Prescription drug three-tier copayment amounts

■ Card plan
■ Mail-order plan

Card plan median copay amounts
Generic \$10 \$25 \$40
Formulary brand-name \$20 \$40 \$60
Nonformulary brand-name \$20 \$40 \$60

Mail-order plan median copay amounts
Generic \$10 \$25 \$40
Formulary brand-name \$20 \$40 \$60
Nonformulary brand-name \$20 \$40 \$60

By region
West \$10 \$25 \$40
Midwest \$10 \$25 \$40
Northeast \$10 \$25 \$40
South \$10 \$25 \$40

By industry
Manufacturing \$10 \$25 \$40
Wholesale/retail services \$10 \$25 \$40
Transport/Communications \$10 \$25 \$40
Health care \$10 \$25 \$40
Financial services \$10 \$25 \$40
Government \$10 \$25 \$40

By number of employees
500-999 \$10 \$25 \$40
1,000-4,999 \$10 \$25 \$40
5,000-9,999 \$10 \$25 \$40
10,000-19,999 \$10 \$25 \$40
20,000 or more \$10 \$25 \$40
All employees \$10 \$25 \$40
Small employers \$10 \$25 \$40

Percentages do not total 100 due to multiple responses

Percentage of employers providing
Health website 78%
Health risk assessment 50%
Nutrition advice 67%

Large employers
By region
West 81% 58% 71%
Midwest 78 58 66
Northeast 74 49 67
South 80 59 69

By industry
Manufacturing 78% 56% 65%
Wholesale/retail 80 40 69
Services 81 55 69
Transport/Communications 88 57 68
Health care 71 57 62
Financial services 82 64 70
Government 68 64 59

By number of employees
500-999 76% 53% 66%
1,000-4,999 78 55 69
5,000-9,999 86 68 79
10,000-19,999 84 69 83
20,000 or more 90 78 85
All employees 80% 57% 69%
Small employers 58 39 49

Percentages do not total 100 due to multiple responses

Mercer National Survey of Employer-Sponsored Health Plans 2007

Specialty Medical Benefits

Prescription drug three-tier copayment amounts

■ Card plan
■ Mail-order plan

Card plan median copay amounts
Generic \$10 \$25 \$40
Formulary brand-name \$20 \$40 \$60
Nonformulary brand-name \$20 \$40 \$60

Mail-order plan median copay amounts
Generic \$10 \$25 \$40
Formulary brand-name \$20 \$40 \$60
Nonformulary brand-name \$20 \$40 \$60

By region
West \$10 \$25 \$40 \$20 \$40 \$80
Midwest \$10 \$25 \$40 \$20 \$40 \$80
Northeast \$10 \$25 \$40 \$20 \$40 \$80
South \$10 \$25 \$40 \$20 \$40 \$80

By industry
Manufacturing \$10 \$20 \$40 \$20 \$40 \$80
Wholesale/retail \$10 \$25 \$40 \$20 \$50 \$85
Services \$10 \$25 \$40 \$20 \$50 \$80
Transport/Communications \$10 \$25 \$40 \$20 \$40 \$70
Health care \$10 \$25 \$40 \$20 \$40 \$70
Financial services \$10 \$25 \$40 \$20 \$50 \$80
Government \$10 \$25 \$40 \$20 \$40 \$75

By number of employees
500-999 \$10 \$25 \$40 \$20 \$40 \$80
1,000-4,999 \$10 \$25 \$40 \$20 \$40 \$80
5,000-9,999 \$10 \$25 \$40 \$20 \$50 \$80
10,000-19,999 \$10 \$25 \$40 \$20 \$50 \$80
20,000 or more \$10 \$25 \$40 \$20 \$50 \$80
All employees \$10 \$25 \$40 \$20 \$50 \$80
Small employers \$10 \$25 \$40 \$20 \$50 \$80

Percentages of employers providing
Health website 78%
Health risk assessment 50%
Nutrition advice 67%

Large employers
By region
West 81% 58% 71% 42% 38% 75% 44%
Midwest 78 58 66 38 29 72 41
Northeast 74 49 67 46 27 77 36
South 80 59 69 45 38 81 45

By industry
Manufacturing 78% 56% 65% 40% 27% 77% 41%
Wholesale/retail 80 40 69 33 24 76 39
Services 81 55 69 44 30 73 45
Transport/Communications 88 57 68 38 30 80 44
Health care 71 57 62 31 31 73 42
Financial services 82 64 70 42 38 77 38
Government 68 64 59 41 30 80 46

By number of employees
500-999 76% 53% 66% 35% 28% 72% 37%
1,000-4,999 78 55 69 40 30 78 46
5,000-9,999 86 68 79 40 42 86 57
10,000-19,999 84 69 83 48 48 88 53
20,000 or more 90 78 85 47 51 91 51
All employees 80% 57% 69% 42% 32% 87% 50%
Small employers 58 39 49 21 16 26 15

Percentages do not total 100 due to multiple responses

Side Head Text
Before Side Head Creation
After
Paragraph-Based Side Heads
Created Complete with
Formatting

The above illustration shows the effects of applying *Side Heads* with formatting settings set in the side heads object style. Please note the spreading of the paragraphs in the bottom half of the page. Both paragraphs are in the same frame and spread by vertical justification. This can be accomplished automatically by setting the object style for the side heads frame to vertically justify using our *Proper VJ* plug-in.

Side Heads

83 שְׁהִירִית • פְּסוּקֵי דוֹמֶרָה

Character Based Side Heads

תְּהִי־לָנוּ כִּי לַיהוָה הַמְּלֹכָה וּמֹשֵׁל בַּגּוֹיִם:
וְעָלוּ מוֹשָׁעִים בְּהָרַ צִיּוֹן לִשְׁפֹּט אֶת־הָרָע עָשׂוּ
וְהָיְתָה לַיהוָה הַמְּלֹכָה:
וְהָיָה יְהוָה לְמֶלֶךְ עַל־כָּל־הָאָרֶץ
בַּיּוֹם הַהוּא יְהִיָּה יְהוָה אֶחָד וּשְׁמוֹ אֶחָד:
(וּבְתוֹרַתְךָ כְּתוּב לֵאמֹר, שָׁמַע יִשְׂרָאֵל, יְהוָה אֱלֹהֵינוּ יְהוָה אֶחָד.)

Paragraph Based Side Heads

This prayer, the concluding blessing of the Verses of Praise, is said standing.

יִשְׁתַּבַּח שְׁמֶךָ לְעַד מְלָכְנוּ
הָאֵל הַמֶּלֶךְ הַגָּדוֹל וְהַקְּדוֹשׁ בְּשָׁמַיִם וּבָאָרֶץ
כִּי לָךְ נָאָה, יְהוָה אֱלֹהֵינוּ וְאֱלֹהֵי אֲבוֹתֵינוּ
שִׁיר וּשְׁבָחָה, הִלֵּל וְזִמְרָה
עֹז וּמִשְׁלָה, נִצָּת, גְּדֻלָּה וּגְבוּרָה
תְּהִלָּה וְתַפְאֳרָה, קִדְשָׁהּ וּמְלֻכּוּת
בְּרִיכוֹת וְהוֹדָאוֹת, מִעַתָּה וְעַד עוֹלָם.
בְּרוּךְ אַתָּה יְהוָה,
אֵל מֶלֶךְ גָּדוֹל בְּתַשְׁבְּחוֹת
אֵל הַהוֹדָאוֹת,
אֲדוֹן הַנִּפְלְאוֹת
הַבּוֹהֵר בְּשִׁירֵי זִמְרָה,
מֶלֶךְ, אֵל, חֵי הָעוֹלָמִים.

SHAHARIT 82

Character Based Side Heads

Ps. 138 ▶ For kingship is the LORD's
and He rules over the nations.
Ok. 1 Saviours shall go up to Mount Zion
to judge Mount Esau,
and the LORD's shall be the kingdom.
Zeh. 14 Then shall the LORD be King over all the earth.
On that day shall the LORD be One and His name One,
(as it is written in Your Torah, saying:
Listen, Israel: the LORD is our God, the LORD is one.)

Paragraph Based Side Heads

This prayer, the concluding blessing of the Verses of Praise, is said standing.

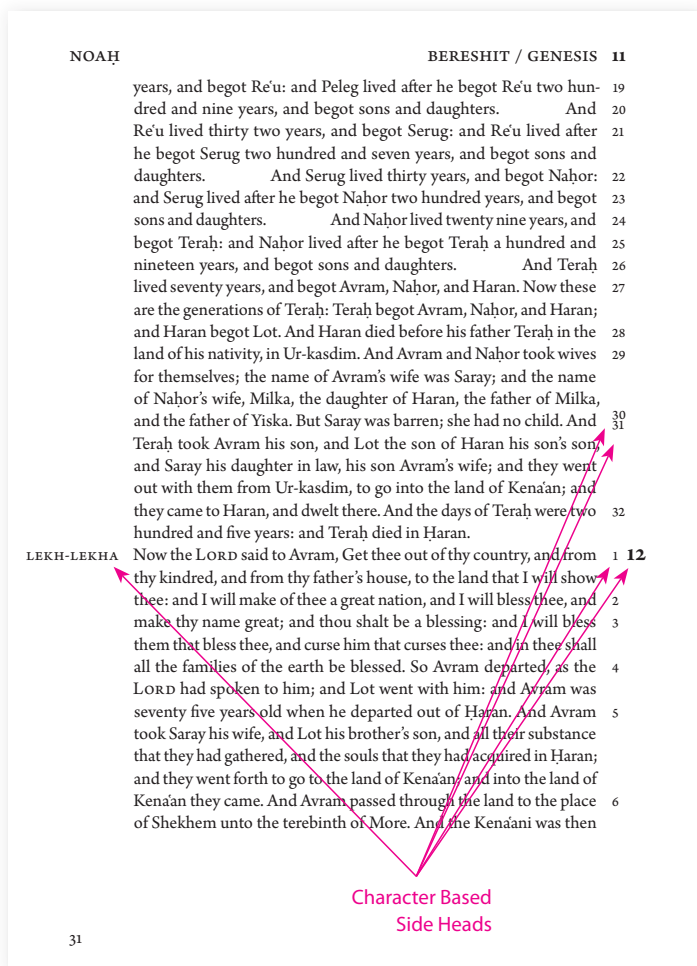
יִשְׁתַּבַּח May Your name be praised for ever, our King,
the great and holy God, King in heaven and on earth.
For to You, LORD our God and God of our ancestors,
it is right to offer song and praise,
hymn and psalm,
strength and dominion,
eternity, greatness and power,
song of praise and glory,
holiness and kingship,
blessings and thanks, from now and for ever.
▶ Blessed are You, LORD,
God and King, exalted in praises,
God of thanksgivings,
Master of wonders,
who delights in hymns of song,
King, God, Giver of life to the world.

The above illustration shows a number of diversified uses for *Side Heads*. The character based side heads show how individual characters can be placed outside the bounds of the text frame. They can be aligned to either the beginning of the paragraph (as shown on the top of the page), or to their original placement (as shown on the bottom).

The paragraph based side heads have been used in a very unique way in this document. They don't look like "side heads" at all! The anchored object settings on these "side heads" were set to "above line". This accomplishes a number of very unique things. 1. There is no need for a separate style for paragraphs which have these "side heads" above them. The "space-before" settings are applied *above the "side head" paragraph*! 2. Changing paragraph and character attributes for a span of paragraphs will not effect the

Side Heads

“side heads”. For example: it is possible to select the entire text frame and change the point size without the “side heads” being affected.

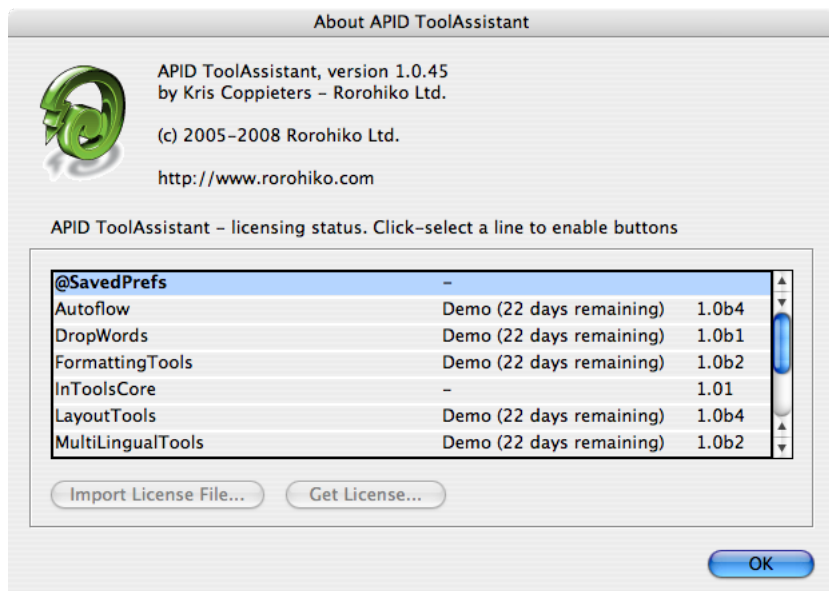


The above illustration shows a page in a bible currently being published using *Side Heads*. There are literally tens (if not hundreds) of thousands of side

Side Heads

heads which are applied. The use of *Side Heads* saves weeks of manual labor. Please note the three different side head frames all attached to the same line (Lekh-Lekha, chapter 12, and verse 1). Additionally, note that verses 30 and 31 are both anchored to the same place. The conflict is automatically detected, and adjusted based on the settings chosen in the configuration window.

Installation



Side Heads is different than most plug-ins. It was developed using a product called “APID ToolAssistant” created by Rorohiko. There is a central controller provided by Rorohiko which does a lot of the low-level processing. *If you are interested in the technology behind the development, you can read the addendum in the back of the manual.*

Side Heads

There are four different files which must be installed for *Side Heads* to function properly: **1.** APIDToolAssistantCSx.xxx (the exact name depends on your version) **2.** @SavedPrefs.spln **3.** InToolsCore.spln (version 1.01) **4.** SideHeads.spln (or LayoutTool.spln if you purchased the Layout Tools bundle). **If you install the Layout Tools bundle, the SideHeads.spln file is not needed, and should be removed.**

All of these files need to be copied to InDesign's plug-ins folder. They may be copied to a sub-folder, but they must all be in the same one!

Please note: APID ToolAssistant replaces an older version of the plug-in. In the past, there were two versions of the API plug-in distributed by Rorohiko. Active Page Items Developer (APID), was the version developed to work with externally developed plug-ins. The free Active Page Items Runtime (APIR), was for plug-ins developed internally at Rorohiko. If you have either of these two plug-ins installed, you must remove them and install the APID ToolAssistant instead. The older APIR or APID plug-ins will not work. You must have the most current version of the APID ToolAssistant installed (version 1.0.45).

Shown above is the “About” window of API. This window can be brought up in two ways: 1. Select InDesign ➔ About Plug-Ins ➔ Rorohiko Ltd. ➔ APID ToolAssistant... 2. API ➔ APID ToolAssistant...

In-Tools plug-ins do not show up separately in the “About Plug-Ins” menu. Information on installed In-Tools plug-ins are only displayed in the “About” window of API. If the plug-ins are properly installed you should see the displayed window (or the equivalent Windows version).

Please note the API version number near the top of the window. Your version number must say 1.0.45 or higher. Additionally it must say “APID Tool-

Side Heads

Assistant”. If it says “Active Page Item Developer” or “Active Page Item Runtime”, you have the wrong version installed. As mentioned above, both of these versions have been replaced with APID ToolAssistant.

When in doubt: search your plug-in folder for a file whose name contains “ActivePageItem”, and replace it with the new one.

In the “About” window, there is a list of all installed plug-ins and their status. The first column lists the plug-ins. The second column shows the license status. If the plug-in is licensed, “Licensed For APID” will be displayed. If the plug-in is in demo mode, the word “Demo” will be displayed along with the number of days remaining until the plug-in expires. The third column shows the plug-in’s version number. When trying to determine that you have the most current version of a plug-in, please refer to the version number listed in this column.

Enabling and Disabling Plug-ins.

To enable or disable any individual plug-in, simply move the file into or out of the folder which contains the APID ToolAssistant plug-in. One simple solution would be to create two folders within your plug-in folder. Name one “API”, and the other “API disabled”. You can then easily move files back and forth.

The APID ToolAssistant is like any other plug-in, and InDesign must be restarted when it is installed or removed. However, the rest of the plug-ins do not require a restart of InDesign when they are installed or removed. Newly installed plug-ins are available in documents when they are opened. If there are open documents when you install any of the *.spln files, those documents should be closed and reopened.

Side Heads

Please note: In-Tools plug-ins are unique, in that menu items will not appear until a document is opened. The plug-ins will appear in the plug-in list in the “About” window, but menu items only appear after a document is opened or created.

Purchasing Licenses and Activation

There are two ways to purchase In-Tools plug-ins: They can be purchased from the In-Tools web site prior to activation, or they can be purchased directly from within InDesign. If the plug-ins are purchased from the web site, you will establish a login and password for activation at the time of purchase. If you purchase the plug-ins from within InDesign, the payment and activation both occur simultaneously. If you plan to purchase a plug-in package, or would like to purchase a number of plug-ins in one transaction, you should purchase them from the In-Tools web site before you initiate the activation process.

No matter how you purchase the plug-ins, the process from within InDesign is the same:

1. Select the plug-in you would like to activate.
2. Click “Get License”. This will take you to the log-in page of the In-Tools web site.

Side Heads

The screenshot displays two sections of a web interface. The top section, titled "Customer Login", has a light blue background and contains the instruction "Please login using your email address and password to continue." Below this are two input fields: "Email Address:" and "Password:". A "Login" button is positioned at the bottom of this section. The bottom section, titled "If you do not yet have an In-Tools account, create one below.", also has a light blue background and contains the instruction "Please enter your email address and choose a password. You will use this password to login to your account in order to install a license from within InDesign." This section includes four input fields: "Name/Company:", "Email Address:", "Choose a Password:", and "Confirm Password:". A "Submit" button is located at the bottom of this section.

Customer Login

Please login using your email address and password to continue.

Email Address:

Password:

Login

If you do not yet have an In-Tools account, create one below.

Please enter your email address and choose a password. You will use this password to login to your account in order to install a license from within InDesign.

Name/Company:

Email Address:

Choose a Password:

Confirm Password:

Submit

If you already have an In-Tools account, fill in your login and password. Otherwise create an account now. If you already paid for your plug-ins, make sure you fill in the login information you provided at the time of purchase. You *must* provide a valid e-mail address or you might not receive your license file.

3. If you have not yet paid for the plug-in you will be taken to a PayPal payment page. On successful completion of the payment, you will be returned to the log-in page.

4. After successfully completing the log-in procedure, you will either get a link to download a license file, or you will receive one by e-mail (depending on various factors). Please allow one to two business days to receive an e-mail with the license file. The license file is specific to the installation from within which you have activated the license. It will not work on a different installation, even with the same serial number. If you need to use In-Tools plug-ins with more than one installation of InDesign, you will need to purchase an additional license for each installation.

Side Heads

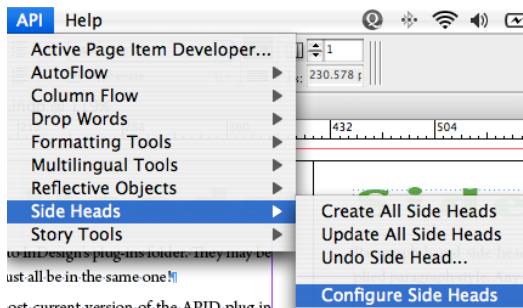
5. Once you have your license file, go back to the “About” window in InDesign, select the plug-in you are activating and click on “Import License File”. Locate the file on your hard drive and click “Open”. The status next to your plug-in will change to “Licensed”.

Please note: After the trial period of In-Tools plug-ins expire, they will only work if *both* the In-Tools plug-in *and* the APID ToolAssistant is licensed. Only one license of the APID ToolAssistant is required per installation of InDesign. If you are not sure whether your installation of the APID ToolAssistant is licensed, make sure you purchase the plug-in using the “Get License” button. The In-Tools activation software will automatically determine if you require the license for APID, and create a double license if necessary.

Setup

There is no limit to the number of side heads which can be set up within a document. All the settings are unique to the individual side head style, so you can mix and match any combination of side head setups within the limitations described below.

There are three basic types of side heads; “paragraph-based” and “character-based” and “footnote-based”.



Side Heads

To define a side head, select API → Side Heads → Configure Side Heads... as shown above.

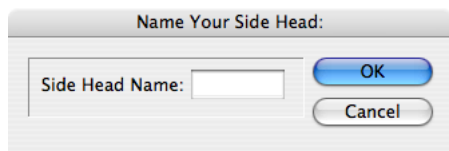
Paragraph-based side heads are defined on the paragraph level by the applied paragraph style. Any number of paragraph styles can be defined as side heads. When a run of paragraphs are all defined as side heads, they are all placed in an anchored frame together, even if they have different side head definitions. The side heads are run in the order they are defined, so the first side head in the list defines the entire run of paragraphs. This is true irrelevant to the order of the paragraphs.

Character based side heads are treated on an individual-basis.

No matter what type of side head you are applying, you must set up an object style first. The object style will define most of the attributes of your side head. This includes position, paragraph style, and just about every other setting you might want other than the size of the text frame which will contain your side head.

Applying Settings

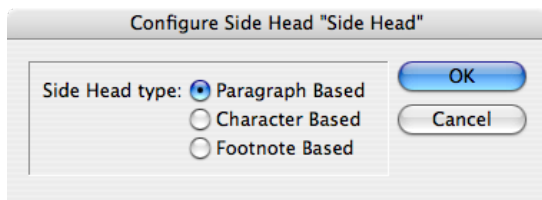
The first thing you must do when defining a side head, is to name it. Make sure that all the names are unique. When you define your first *Side Head* the following dialog will appear:



The dialog box has a title bar that says "Name Your Side Head:". Inside, there is a label "Side Head Name:" followed by a text input field. To the right of the input field are two buttons: "OK" and "Cancel".

After naming your side head, you are presented with a dialog to pick the side head type as shown:

Side Heads

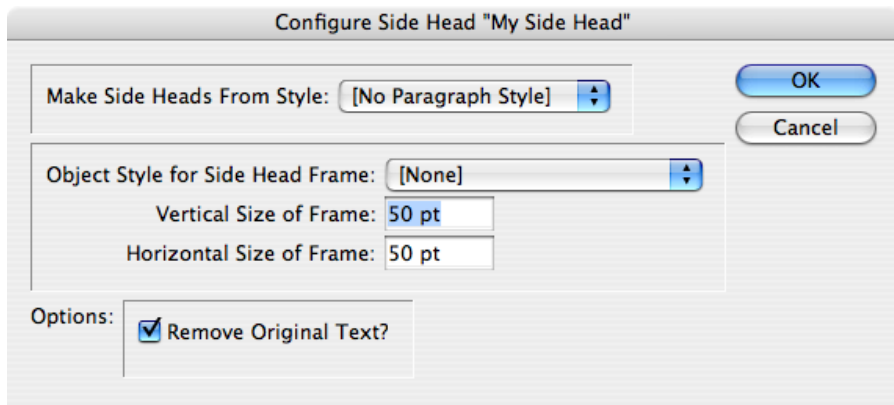


Once a particular side head is defined as either a paragraph-type or a character-type, that type can not be changed. All other attributes can be changed later.

Paragraph Type

Paragraph-type side heads are side heads defined by a paragraph style. The paragraphs with the selected style are transferred to the side head frame. If there is more than one paragraph with side head styles all styled paragraphs will be moved together. If there is more than one style, the anchored frame settings will be defined by the first style defined as a side head.

If the paragraph-type is chosen, you are presented with the following dialog:



Side Heads

The options in the dialog box are self-explanatory. In the top drop-down list select the paragraph style which you are defining as a side head.

The area below that defines the attributes of the containing text frame: the object style, and the size. The size is defined in your preferred units of measurements. The default size is 50 points by 50 points, but can be any size you choose.

At the bottom of the dialog box is an option to either leave or remove the original text. In most situations, the checkbox should remain checked. In situations where you want the text to be duplicated, rather than moved to the side head frame (such as pull quotes), you should uncheck it.

Character Type

If the character-type is chosen, you are presented with the following dialog:

The screenshot shows a dialog box titled "Configure Side Head 'My Side Head'". It contains several settings for creating a side head from a paragraph style. At the top right are "OK" and "Cancel" buttons. The main settings are as follows:

- Make Side Heads From Style:** [None]
- From Within Paragraph Style:** Any
- Object Style for Side Head Frame:** [None]
- Alternate Style One:** Original
- Alternate Style Two:** Original
- Vertical Size of Frame:** 50 pt
- Horizontal Size of Frame:** 50 pt

Below these settings is an "Options:" section with two checked checkboxes:

- ☒ Remove Original Text?
- ☒ Remove Character Style?

At the bottom is an "Align Side Head:" section with two radio buttons:

- ☒ To Original Text Location
- ☐ To First Line in Paragraph

Side Heads

The first area in the dialog defines the source text. A character style must be picked, and optionally a containing paragraph style. Nested styles are not currently supported. You must have the character style manually applied to the appropriate text.

The second area defines the text frame attributes. Object style and frame size options are the same as the paragraph-type side heads. Alternate styles are used when side heads collide (i.e. when there are two instances on the same line.) If two side heads are anchored to the same line and have the same definition, the first side head will take on the first alternate style, and the second will take on the second. There are currently no provisions for more than two conflicting side heads per line.

As with paragraph-type side heads, the size is defined in your preferred units of measurements. The default size is 50 points by 50 points, but can be any size you choose.

At the bottom of the dialog box are the following options:

“Remove Original Text” provides the same functionality as in paragraph style side heads.

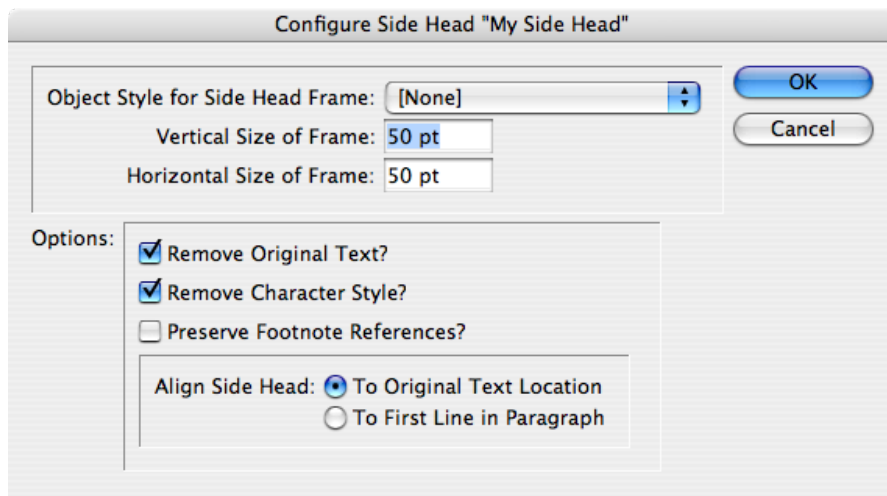
“Remove Character Style”: If this box is checked, the character style will be stripped from the source text when moved to the side head frame. The text will take on all the attributes of the paragraph style as defined by the object style of your side head frame.

The “Align Side Head” option allows you to anchor the side head to either the original text position or the first line of the containing paragraph.

Side Heads

Footnote Type

Footnote-type side heads enable creation of side heads/notes from footnotes with the click of a button. The side notes can be changed back to footnotes just as easily. If the footnote-type is chosen, you are presented with the following dialog:



The dialog box is titled "Configure Side Head 'My Side Head'". It contains the following elements:

- Object Style for Side Head Frame:** A dropdown menu currently set to "[None]".
- Vertical Size of Frame:** A text input field containing "50 pt".
- Horizontal Size of Frame:** A text input field containing "50 pt".
- Options:** A section containing three checkboxes:
 - ☒ Remove Original Text?
 - ☒ Remove Character Style?
 - ☐ Preserve Footnote References?
- Align Side Head:** A section with two radio buttons:
 - ☒ To Original Text Location
 - ☐ To First Line in Paragraph

On the right side of the dialog are two buttons: "OK" and "Cancel".

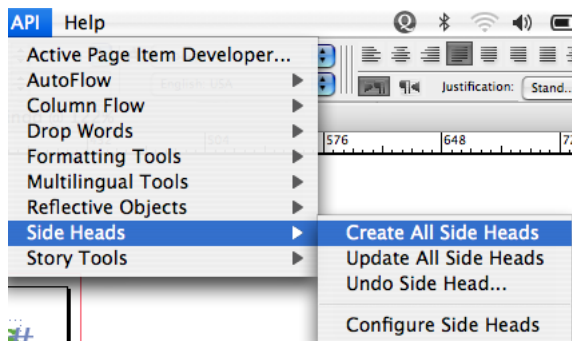
You will notice that these options are very similar to the character-style options. The first difference is that the styles are missing. This is because the side heads are created from footnotes regardless of style. The second difference is, that footnote-based side heads have an option to preserve footnote references. *Please note that these are currently limited to Arabic numbers. Other numbering styles (i.e. roman numerals, etc.) will not be honored. Side Heads uses xml elements to keep the side note numbering undoable. These could be shown in your layout view. If they are distracting, you may want to hide them under View → Structure → Hide Tag Markers.*

Side Heads

Creating Side Heads:

Once your side heads and your object styles are properly defined, it's time to create your side heads.

Select “Create All Side Heads” from the sub-menu under “Side Heads”.

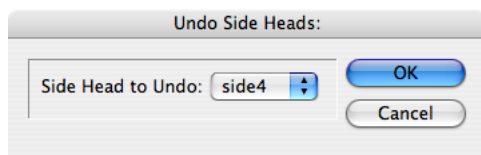


In most situations, once you have defined and run your side heads, your side heads are set.

Update All Side Heads

Sometimes further adjustments are required after you have created your side heads. One common situation occurs when character-based side heads conflict. When your text re-flows, some conflicts may resolve themselves and new conflicts may appear. To rectify these situations, simply select update all side heads, and all side heads will be properly adjusted.

Undo Side Heads



Side Heads

You also have the option of undoing a side head. When a side head is undone, the text is returned to its original placement with its original style. If the side heads are footnote-based, the text will be converted back to footnotes. Simply select the side head definition to undo in the above dialog box.

Addendum

What is “APID ToolAssistant”?

Classically, there are only two ways to automate InDesign. One way is by scripting. Scripts are a series of commands written in one of the three supported scripting languages — AppleScript for the Macintosh, Visual Basic for Windows, or ExtendScript for both platforms. ExtendScript is Adobe’s version of javascript. For scripts to run, they must be placed in the application script folder and explicitly run. For automation to be truly automatic, it requires “event processing”. This means that certain events trigger specific processes to take place. There is limited event-triggered scripting available in CS3.

To achieve true integration, plug-ins must be programmed using C++. Developing C++ plug-ins is a very involved, and lengthy process. APID ToolAssistant is a plug-in which allows very fine grained event processing using ExtendScript. It allows for creation of advanced plug-ins in a fraction of the time required when programming using C++. It also aids in the creation of hybrid plug-ins which mix ExtendScript and C++ for maximum efficiency.

Without the APID ToolAssistant, it would not have been possible to create the collection of plug-ins we offer in the same amount of development time. This increased programming efficiency means more functionality for the end user and lower prices.

Side Heads

Additionally, APID ToolAssistant offers the ability to attach scripts to specific objects. These attached scripts can be run automatically when triggered by specific events. Anyone who has a licensed version of the APID ToolAssistant plug-in installed can create and use these attached scripts. There are also additional scripting properties and methods which are usable by scripters. For more information see Rorohiko's web site.

Side Heads

Acknowledgements

We wish to thank the many people who have helped make In-Tools plug-ins possible.

To those who give graciously of their time and expertise on the InDesign scripting forum: thank you for introducing us to automating within InDesign. Most specifically, Dave Saunders, Olav Kvern, and Peter Kahrel.

To Kris Coppieters, thank you for your incredible support throughout the entire development process. Your help with product improvements and with coding tips and techniques has been incredible. Your support has been above and beyond what we could have reasonably expected. It has really been a pleasure working together. Thank you.

To all our beta testers, thank you for the valuable input which helped shaped our plug-ins. To Brad Walrod: a special thank you for your unrelenting comments and suggestions. To Peter Gold and Raphael Freeman: thank you for your many useful suggestions.

Side Heads

License Agreement

Please read the following document carefully!

This is a legal agreement (the Agreement) between you and Print Israel LLC (In-Tools), the developer of the In-Tools software. This Agreement pertains to your use of the In-Tools software and documentation which are provided to you by In-Tools (collectively, the Software). By copying, installing, or otherwise using the Software, you accept all the terms and provisions of the Agreement.

Terms of Use

The provisions of the [In-Tools Privacy Policy](#) are incorporated herein and made a part hereof.

License

This Agreement grants you a personal, non-exclusive, non-transferable, non-sublicensable right to use one copy of the Software for use on a single computer and/or workstation for each license that you purchase. You may try the Software before purchasing a license, for the specified amount of time in the materials accompanying the Software. YOU UNDERSTAND AND AGREE THAT BY USING THE TRIAL SOFTWARE, AFTER THE AMOUNT OF TIME YOU MAY NOT BE ABLE TO CONTINUE TO USE THE SOFTWARE UNLESS YOU PURCHASE A LICENSE.

In-Tools reserves all rights in the Software not expressly granted herein, including without limitation ownership and proprietary rights.

License Restrictions

You may not reverse engineer, decompile or disassemble the Software. The restrictions contained herein apply equally to any updates that may be provided to you by In-Tools.

Intellectual Property Rights and Third Party Materials

All service marks, logos, trade names, trade dress, and trademarks of In-Tools (collectively Marks) are the exclusive property of In-Tools and nothing in this Agreement

Side Heads

shall grant you the license to use such Marks. All intellectual property rights in the Software are owned exclusively by In-Tools and are protected by United States of America copyright laws and international copyright treaty provisions. Any violation of the terms set forth herein is expressly prohibited by law and may result in severe civil and criminal penalties.

Disclaimer of Warranties

ALL SOFTWARE PROVIDED BY IN-TOOLS ARE PROVIDED AS IS. IN-TOOLS AND ITS AGENTS, PARTNERS, OR EMPLOYEES MAKE NO REPRESENTATION OR WARRANTY TO YOU OR ANY OTHER PERSON OR ENTITY, WHETHER EXPRESS, IMPLIED, OR STATUTORY, AS TO THE DESCRIPTION, QUALITY, TITLE, NON-INFRINGEMENT, MERCHANTABILITY, COMPLETENESS, OR FITNESS FOR A PARTICULAR USE OR PURPOSE AS TO THE SOFTWARE PROVIDED TO YOU, OR AS TO ANY OTHER MATTER, ALL SUCH WARRANTIES HEREBY BEING EXPRESSLY EXCLUDED AND DISCLAIMED.

NEITHER IN-TOOLS NOR ANY OF ITS AGENTS, PARTNERS, OR EMPLOYEES WARRANTS THAT THE SOFTWARE OR SERVICES ARE ERROR FREE OR WILL OPERATE WITHOUT CAUSING LOSS OR INTERRUPTION YOUR COMPUTER USAGE OR DATA. YOU ASSUME TOTAL RESPONSIBILITY AND RISK FOR YOUR USE OF THE SOFTWARE.

Limitation of Liability

IN NO EVENT SHALL IN-TOOLS, ITS AFFILIATES, SUBSIDIARIES, PARENT COMPANIES, AGENTS, NETWORK SERVICE PROVIDERS, PARTNERS, OR EMPLOYEES BE LIABLE TO YOU OR ANY THIRD PARTY IN ANY RESPECT FOR ANY COSTS OR DAMAGES ARISING EITHER DIRECTLY OR INDIRECTLY FROM THE USE OF IN-TOOLS SOFTWARE INCLUDING WITHOUT LIMITATION ANY ACTUAL, INCIDENTAL, CONSEQUENTIAL, EXEMPLARY, PUNITIVE, RELIANCE OR SPECIAL DAMAGES, OR FOR ANY LOSS OF REVENUE, PROFITS, USE, DATA, GOODWILL OR BUSINESS OP-

Side Heads

PORTUNITIES OF ANY KIND OR NATURE WHATSOEVER, ARISING IN ANY MANNER FROM ANY CAUSE OF ACTION OR CLAIM RELATING TO THIS AGREEMENT, TO THE SERVICES PROVIDED BY IN-TOOLS OR TO THE USE OF THE SOFTWARE. THIS LIMITATION OF LIABILITY APPLIES EQUALLY TO ANY THIRD PARTIES WITH WHOM IN-TOOLS ENTERS INTO A BINDING AGREEMENT TO MARKET, DISPLAY AND/OR DISTRIBUTE THE SOFTWARE TO END USERS AND SUCH THIRD PARTIES SHALL NOT BE LIABLE TO YOU OR ANY OTHER THIRD PARTY FOR ANY OF THE DAMAGES SET FORTH ABOVE.

Export Control Laws.

You agree to comply with all laws, rules and regulations applicable to the export of the Software. Specifically, you shall not export, re-export or transship the Software, or the direct product thereof, in violation of any United States laws and regulations which may from time to time be applicable. None of the Software or underlying information or technology may be downloaded or otherwise exported or re-exported (i) into, or to a national or resident of, Cuba, Iran, Iraq, Libya, North Korea, Sudan, Syria or any other country to which the U.S. has embargoed goods; or (ii) to anyone on the U.S. Treasury Department's list of Specially Designated Nationals or the U.S. Commerce Department's Table of Denial Order. By downloading or using the Software, you are agreeing to the foregoing and you are representing and warranting that you are not located in, under the control of, or a national or resident of any such country or on any such list.

Jurisdiction and Other Provisions

This Agreement and the relationship between In-Tools and you shall be governed in accordance with the laws of the State of New York. Any dispute between you and In-Tools regarding this Agreement will be subject to the exclusive jurisdiction of the state and federal courts in the State of New York. You agree to submit to exclusive jurisdiction in the State of New York, and you expressly waive all defenses to jurisdiction.

Side Heads

This Agreement is the entire agreement between you and In-Tools relating to your use of the Software and supersedes any other communications or advertising with respect to the Software. If any provision of this Agreement is held invalid, the remainder of this Agreement will continue in full force and effect. In-Tools failure to insist upon or enforce strict performance of any provision of this Agreement shall not be construed as a waiver of any provision or right. Neither the course of conduct between the parties nor trade practice shall act to modify any provision of this Agreement. In-Tools may assign its rights and duties under this Agreement to any party at any time without notice to you.

Modifications of Agreement

In-Tools may modify this Agreement at any time without providing notice to you. Such modification will be made by posting a revised agreement on its web site and such modification shall be deemed effective immediately upon posting of the modified Agreement. Your continued access or use of the Software or Services shall be deemed your acceptance of the modified Agreement. You agree to check our web site periodically to review such modifications.

Termination or Modifications of Software

You may terminate this Agreement at any time. The In-Tools may immediately terminate the Agreement if you breach any representation, warranty, agreement or obligation contained or referred to in the Agreement. Upon termination, you must dispose of the Software and all copies or versions of the Software by destroying the Software. In-Tools reserves the right to modify the Software at any time without providing notice to you. In-Tools right to modify the Software applies to all or any aspect of the Software.

YOU ACKNOWLEDGE THAT YOU HAVE READ THIS AGREEMENT AND UNDERSTAND IT AND THAT, BY USING THE SOFTWARE, WEB SITE, YOU AGREE TO BE BOUND BY ITS TERMS AND CONDITIONS.